



Construction Inspection and Management

## CAPABILITY STATEMENT

[www.4hdconsultants.com](http://www.4hdconsultants.com)

### 4HD Inc

4HD Inc. was established in Lombard IL, by Engineer Renad Alrousan and certified as a **DBE** by the Illinois Department of Transportation (IDOT) and **WBE** by the City of Chicago Department of Procurement Supplier Diversity. 4HD Inc. is prequalified in Construction Inspection Services (Phase III) and Research with multidiscipline. Our Engineers have extensive transportation experience and our goal to serve both public and private organizations with diversified of expertise to include:

- **Construction Management**
- **Project Management**
- **Project Planning and Scheduling**
- **Project Control**
- **Project Inspection and documentation**

4HD Inc. is a women business firm, we have gained experience and well understand the needs of our clients and build on what we already know to provide the superior and best results and outcomes. Since its inception, 4HD has become a recognized consultant in Construction Management and Project Management with a specialty in Transportation. 4HD provides comprehensive construction management services customized to provide the best results for the project. 4HD's team applies their knowledge and experience in engineering and construction to the everyday challenges that occur throughout the construction process.

4HD Inc. continues with dedicated and qualified team's members having highly professional background, vision, and skills. Our Team combines technical excellence with superior understanding of client needs and the environment in which our client operates. Our mission is to form long-term relationships of value with our clients and partners, using quality construction and engineering solution and employing the best resource and latest techniques.

4HD's Experience included bridge construction, street, roadway & highway construction, various project and more.

### STAFF & RESOURCES

Our engineering staff consists of Licensed Professional Engineers PE. SE, Resident Engineer MBA. CE. EE, Three Experienced Construction Inspectors and one Project Controller.

#### DATA OF COMPANY

DUNS: 968775564

NAICS:

- Construction Management, Highway Road, Street & Bridge- 237310
- Civil Engineering Services – 541330
- Management and Consulting Services-541611
- Research and development in Physical, Engineering, and Lab science-541712

Cage Code: 71AB1

#### CONTACT:

Renad Alrousan. CHE. BE. IE  
Corporate President and CEO  
(630) 202-7892

[ralrousan@4hdconsultants.com](mailto:ralrousan@4hdconsultants.com)

330 East Roosevelt Rd, Suite 2G  
Lombard, Illinois. 60148

#### Certification:

WBE. City of Chicago  
DBE, Illinois Dept of Transportation

#### IDOT Pre-qualifications:

Special Services: Construction Inspection

#### CLIENTS

IDOT (Illinois Department of Transportation)  
Illinois Tollway  
City of Chicago

### Management Approach and Philosophy

From years of experience in the construction industry, 4HD has a fundamental leadership approach that is based on a commitment to excellence in customer and client service. To enact this basic philosophy, 4HD holds to the following key principles:

- Quality and best qualified, experienced, and motivated personnel and engineers.
- Placement of highly competent senior project manager, and team leader level and provide them with the resources and authority for quick and efficient decision-making.
- Strong Sub consultants and clients. This helps support our projects by developing long term relationships with highly talented sub consultants in our area of operations.

## ATLAS "ON THE MOVE"

### Contact

**Natalia Homedi, P.E.**

3100 Dundee Road, Suite 502

Northbrook, IL 60062

Tel: 847.753.8020 | Fax: 847.753.8023

nhomedi@aegroupltd.com

### Certifications

#### DBE

Disadvantaged Business Enterprise

#### WBE

Woman Business Enterprise

#### SBE

Small Business Enterprise

### NAICS Codes

**541330**

Civil Engineering Services,  
Construction Engineering Services,  
Engineering Consulting Services

**237310**

Construction Management, Highway,  
Road, Street & Bridge

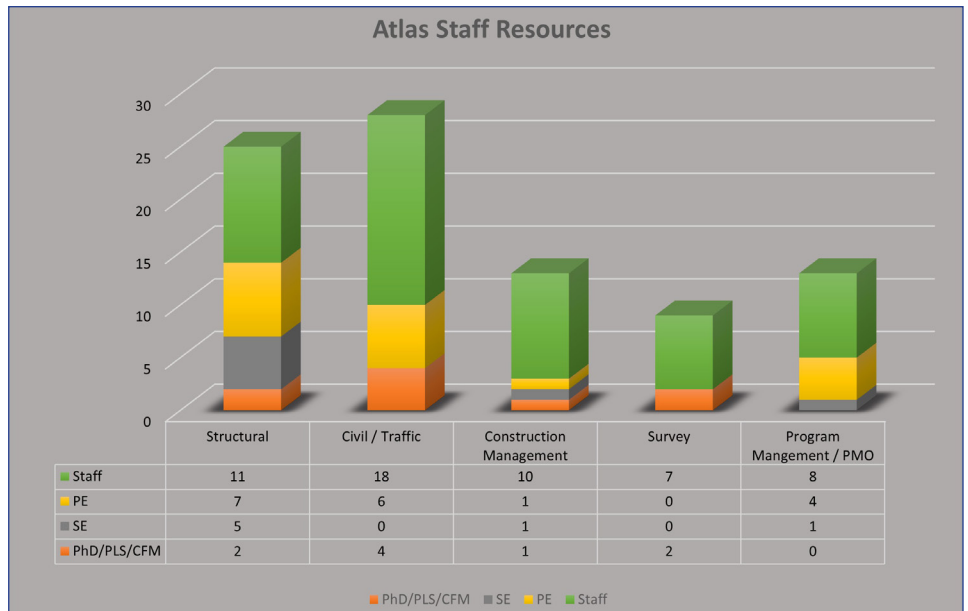
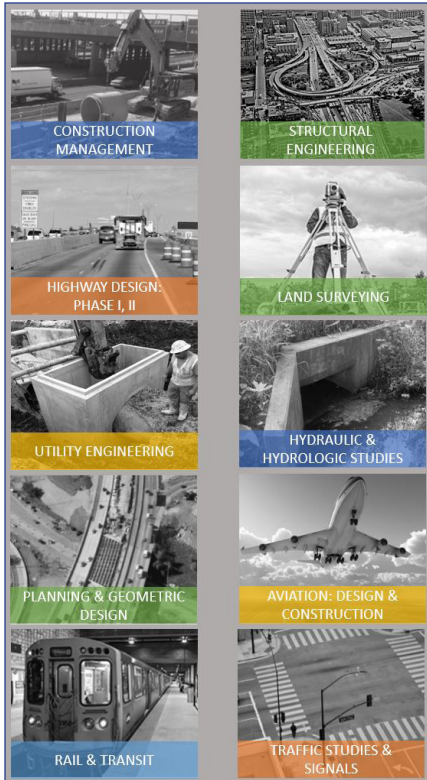
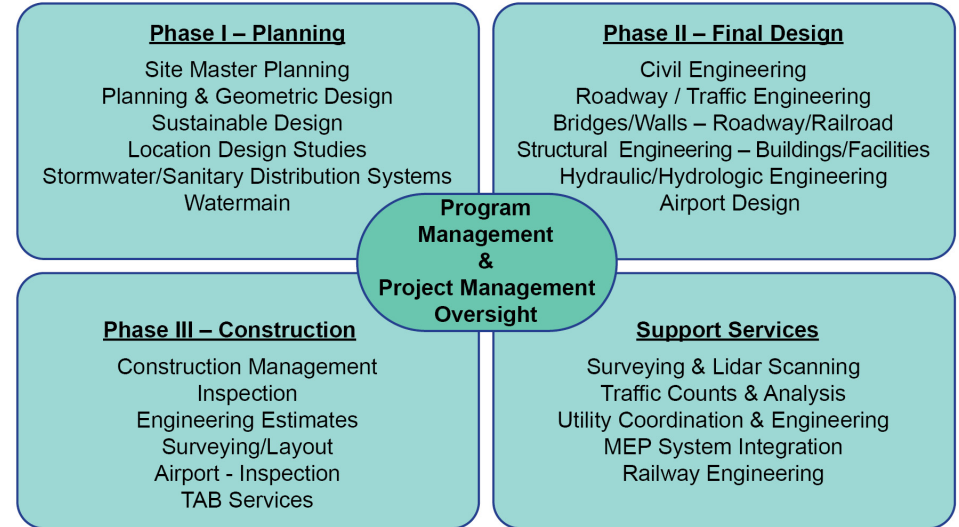
**Atlas Engineering Group, Ltd. (Atlas)** is a professional, licensed consulting engineering and land surveying firm specializing in planning, civil & structural engineering design, construction management & inspection, transportation studies, rail and airport engineering and land surveying services for public and private sector projects.

### AWARDS

**2013 Tollway** - "People on the Move Illinois"

**2019 NOME** - "Top Minority Achiever Award" Tollway/CCDOH Roselle Road Project

**CORE SERVICES:** Atlas offers a range of services to support all modes of transportation infrastructure, facilities, utilities, and related projects:



	Structures	Highways	Hydraulics	Special Services	Studies	Airports
IDOT Prequalifications						
	<ul style="list-style-type: none"> <li>Advanced Typical</li> <li>Typical</li> <li>Simple</li> <li>Railroad</li> </ul>	<ul style="list-style-type: none"> <li>Freeways</li> <li>Roads &amp; Streets</li> </ul>	<ul style="list-style-type: none"> <li>Waterways: Complex</li> <li>Waterways: Typical</li> <li>Pump Stations</li> </ul>	<ul style="list-style-type: none"> <li>Surveying</li> <li>Construction Inspection</li> <li>Sanitary</li> </ul>	<ul style="list-style-type: none"> <li>Traffic Signals &amp; Studies</li> <li>Railway Engineering</li> <li>Location Drainage</li> <li>Location Design - <ul style="list-style-type: none"> <li>Major Reconstruction</li> <li>Major Rehabilitation</li> </ul> </li> </ul>	<ul style="list-style-type: none"> <li>Design</li> <li>Construction Inspection</li> </ul>

# Why work with ABNA?

## Your Full Service Engineering Partner

- **FULL SERVICE** civil engineering firm
- Serve **16 ENGINEERING MARKETS**
- **MINORITY DIVERSE FIRM**
- **CAPACITY** for projects of Illinois State Toll Highway Authority size & scope
- Expertise in all Phases (**PI, PII, and PIII**) Planning, Design and Construction Management.
- Licensed in 10 states
- **SUCCESSFUL 20+ YEARS WORKING RELATIONSHIP** with Tollway Staff
- **Over 20 IDOT Qualifications** including:
  - ✓ Structures - Highway: Advanced Typical
  - ✓ and Special Studies - Lighting: Typical

St. Louis, Missouri  
4140 Lindell Boulevard  
St. Louis, MO 63108  
P: [314] 454-0222

Chicago, Illinois  
9901 S. Western Ave. Ste 001  
Chicago, IL 60643  
P: [773] 881-4788

Southern Illinois  
327 Missouri Ave. Ste 625  
E. St. Louis, IL 62201  
P: [314] 454-0222



ABNA primed Jane Addams Memorial Tollway (I-90) and Lee Street Interchange



[www.abnacorp.com](http://www.abnacorp.com)

### Core Competencies

Bravo Company Engineering is a certified veteran owned small business providing civil and transportation engineering consultant and management services in the Chicagoland area.

- construction management
- construction inspection/documentation
- transportation design
- land acquisition specialty services
- environmental
- water resources
- municipal
- survey

### Recent Projects

#### Illinois Tollway Construction:

- CM Systemwide Upon Request Roadway
  - RE for two signing upon request contracts
  - Surety warranty work inspection
- CM Systemwide Upon Request Non-Roadway
  - Inspection for JOC building work
- I-294/I-94 CM Road and Bridge Rehabilitation
  - Inspection and documentation
- I-88 CM Road and Bridge Rehabilitation
  - Inspection and documentation

#### Illinois Tollway Design:

- I-94 at Stearns School Road Bridge Reconstruction
  - Utility Coordination and plans
  - Specs, cost estimate, P-pages
- I-88 Road and Bridge Rehabilitation
  - Design plans for EC and landscaping

#### IDOT:

- Currently a prime for Various D2 inspection
- QA/QC for IL31/US 20 Design

#### Municipalities:

- Village of Schaumburg CDBG Sidewalk Program
- Village of Addison Watermain, Campus Parking Lot Reconstruction, and CDBG Street Program
- Village of Big Rock Street Resurfacing Program

#### Capital Development Board (CDB)

- Subconsultant on Multiple Projects Performing Site Civil Design and Commissioning Services

#### Metropolitan Water Reclamation District (MWRD)

- Subconsultant on Multiple Projects Performing Site Civil Design and Inspection Services

### Certifications

#### IDOT Prequalified in:

- Special Services - Construction Inspection
- Special Services - Subsurface Utility Engineering
- Location Design Studies – Rehabilitation
- Location Design Studies - Reconstruction/Major Rehabilitation
- Highways - Roads and Streets
- Special Studies – Safety

#### Certified VOSB for

- CMS
- CVE
- CDB
- MWRD
- Cook County

**Looking to team up with prime consultants for Construction Management, Design, and Survey**

#### Contact:

Joseph Kozial, P.E. or Reid Magner, P.E.  
 630-702-9855 224-239-6346  
[jkozial@bravocoeng.com](mailto:jkozial@bravocoeng.com) [rmagner@bravocoeng.com](mailto:rmagner@bravocoeng.com)

Bravo Company Engineering  
 1111 Burlington Ave, #108G  
 Lisle, IL 650532

[www.bravocoeng.com](http://www.bravocoeng.com)





# AMERICAN ENGINEERING CONSULTANTS, INC.

*Construction Managers & Consulting Engineers*

## CAPABILITY STATEMENT

### DBE/MBE-Certified

**NAICS Codes:**  
**541330**  
**Engineering Services.**

### STAFF TRAINED IN:

- Tollway E-builder
- Tollway IMIRS
- IDOT CMMS
- IDOT Erosion & Sediment Control
- IDOT material management of Resident Engineers
- ADA Ramps Specification



### CONTACT INFORMATION

**Haleema Begum**

Vice President of Administration  
(773) 775-2050

[hbegum@americanengconsultants.com](mailto:hbegum@americanengconsultants.com)

**5858 N. Northwest Hwy, Suite F**

**Chicago IL, 60631**

### BUSINESS SUMMARY

**American Engineering Consultants, Inc. (AEC)** is a **new** Chicago-based **DBE/MBE** firm providing engineering services in Transportation Engineering and Construction Management (CM) of Infrastructure projects for the State of Illinois.

AEC is IDOT-prequalified in 'Construction Inspection – Special Services'.

### EXPERTISE/CORE COMPETENCIES

- Material Coordination
- Construction Inspection
- Resident Engineering
- Project Documentation
- Construction Management
- Documentation Audit
- IL-P.E. Licensed Engineers
- IDOT(S-14) Documentation Cert
- IDOT S-33, Soil Testing
- IDOT QC/QA - PCC III & HMA III Certified
- OSHA-30 – Safety Training

### PAST PERFORMANCE/DIFFERENTIATORS

- Our Engineers are experienced in construction inspection and construction management for roadway and bridge projects with IDOT, IL-Tollway & CDOT.
- Experts as Material Coordinators for IL-Tollway & IDOT.
- Staff experienced in Resident Engineering & Documentation.

### PRESENT OBJECTIVES (PSB 21-1)

- ✓ **Teaming up for Phase III work in PSB 21-1**
- ✓ **Partnering for Growth (P4G) in PSB 21-1**

### POTENTIAL CLIENTS



# CAPABILITY STATEMENT

American Veteran Industries, LLC  
Email: [office@aviveterans.com](mailto:office@aviveterans.com)  
Phone: (815) 838-4200  
[www.aviveterans.com](http://www.aviveterans.com)



## OUR VALUES

*“AVI will accomplish uncompromising quality to our clients through principled leadership and an abundance mentality built on service.”*

## CORE COMPETENCIES

### PROJECT MANAGEMENT (PM)

- ☑ Owners Rep (ex-Tollway)
- ☑ Maintenance, Plaza Ops
- ☑ CM/RE/Inspector Staff
- ☑ Environmental Specialists
- ☑ Tolling Experts (ORT/AET)

### CONSTRUCTION MANAGEMENT (CM)

- ☑ Construction Inspection
- ☑ IDOT Level I, II, III (var.)
- ☑ Expertise in ‘Systemwide’
- ☑ Landscaping/Roadside
- ☑ Doc Control (IDOT S-14)

## CONTACT US

### PRESIDENT

(SFC) Aaron Jones  
(630) 738-9786

[aaron@aviveterans.com](mailto:aaron@aviveterans.com)

### DIR. OF ENGINEERING

Mujeeb Basha, PE  
(630) 770-6559

[mujeeb@aviveterans.com](mailto:mujeeb@aviveterans.com)

## [DIFFERENTIATORS]



As a Veteran-owned company, you can expect high-energy discipline from our staff.



Our ‘Mission Mindset’ philosophy will bring to bear immediate & recognizable results for a successful outcome.



Company, staff experience with innovative contracting: SYSTEMWIDE, FACILITIES, JOC

## [MARKET EXPERTISE]



HIGHWAYS / BRIDGES



TOLLING OPS & ITS



AIRPORT INTERFACE (Landside/Coord.)



RAILROAD / UTILITIES



Finance Control / Trust Indenture (FINRA-licensed)

## DESIGNATIONS

NAICS: 237310, 238120, 541320, 541330, 561730

NIGP: 90700, 90740, 92064, 92517, 92536, 98814

DUNS #: 080614513

CAGE CODE: 8BVN2

### OTHER CERTIFICATIONS:

State of Illinois

-Design Firm

-CMS Certified SDVOSB

Chicago Zoological Society

JP Morgan Chase (Private)

## [CLIENTS / PARTNERS]



PUBLIC WORKS (State, Municipal, Chartered Govt)

- Illinois Tollway
- Illinois DOT
- Village of Bolingbrook (Clow Airport; FAA: 1C5)
- Village of Romeoville
- United Bridge Partners (Cline Avenue Toll Bridge)



COMMERCIAL WORK

- ComEd
- Pulte Homes
- CSX Railroad
- Hilton Hotel Properties
- Advocate Christ Hospital
- Meijer, Home Depot, AMC Theaters



## Capability Statement

AMES Engineering, Inc. is an IDOT DBE consulting engineering firm established in 2009.

We perform Phase I, Phase II and Phase III engineering work.

Our firm is led by Company President Ahsan Siddiqi with his 30 years' engineering experience.

We are well known for our Complex Lighting work. Brenda Lowery, PE heads up our Lighting and Electrical Engineering group.

Joe Regis, PE, PTOE, CFM is in charge of our Civil Phases I and II team. We offer complete roadway planning and design services.

Resident Engineer, Wes Brazas, and four inspectors specialize in Tollway Phase III Engineering.

Traffic Signal design and Phase I Traffic Study work is performed by Toby Mickey, PE, PTOE.

Our ITS work is a collaboration of Brenda, Joe and Toby.

Our quality of work is demonstrated by the firm's involvement in ACEC awarding winning projects.

Our geographic coverage is primarily northeastern Illinois however, we practice throughout the State of Illinois.

For Tollway Projects, prime firms often ask AMES to participate in a relatively large percentage of work by bundling lighting and civil support.

For IDOT Projects, we often perform lighting, traffic signals and civil support.



**Aqua Vitae**  
Water & Life

**Contact:**

Gary Paradoski, PE  
President  
847-239-4512  
gparadoski@aqua-vitaegroup.com  
aqua-vitaegroup.com

**VBE Certifications:**

CMS: 20320350  
CDB: 35547  
MWRD: 5016948  
MMSD: 20320350  
VA: 079423784

## Capability Statement

**Aqua Vitae Engineering, LLC**, a veteran owned small business founded in 2014 by Gary Paradoski, who has over 30 years of engineering and surveying experience, specializes in green infrastructure, natural resources and water quality. Aqua Vitae's projects include the design of erosion & sediment controls, landscape, utilities, hydrology & hydraulic studies, water quality modeling & analyses, and sustainable storm water management.

Aqua Vitae has experience in land surveying, CADD and earth balancing, GIS mapping, permit acquisition and administration, construction bid documents, specifications, and construction inspection.

**Memberships:**



### Core Competencies:

Green infrastructure ~ Natural resources ~ Water quality

### Past Performance:

- Illinois Tollway DSE: Systemwide landscape, Tri-State roadway reconstruction—Roosevelt to St. Charles and Wolf to O'Hare Oasis, O'Hare Oasis demo, EOWA/Jane Addams interchange design, EOWA roadway design, US 20 over Jane Addams improvements, Reagan Memorial reconstruction, Systemwide DUR, Tri-State DUR, systemwide pavement and life cycle analysis, environmental studies upon request
- Illinois Tollway CM: Systemwide landscape, Tri-State Wolf to Balmoral, EOWA—North to Grand and Grand to Wolf, Tri-State CUR x 2
- IDOT: District One Bureau of Maintenance NPDES and 404 reviews, inspections, pre-construction meetings

### Differentiators:

- Proactive problem solving for design and construction issues
- Relationships with Tollway Environmental, DCM Drainage, CCM, IDOT
- Illinois Tollway and IDOT experience: 19 contracts
- Client Satisfaction Rating: 4.9/5.0
- Accustomed to accelerated schedules and thorough QA/QC protocol

**Aqua Vitae Engineering, LLC**

3400 W Stonegate Blvd, #100-2311, Arlington Heights, IL 60005

## Construction Management in Illinois

Arcadis has been providing program and construction management services to Illinois clients since 2011. We provide construction management and engineering to support modernizations and capital improvement programs for agencies such as the Illinois Tollway, Metra, Chicago Transit Authority, Chicago Department of Transportation and other agencies.

### TRUSTED LOCAL LEADERSHIP



**Dave Sliwa, CCM** has 16 years of experience in the construction industry providing construction management, resident engineering and project controls services, including roadway, structures, rail, and other types of civil construction.



**Russell Randich, CCM** is a construction management professional with more than 30 years of experience in the transportation industry. His expertise includes roadway, structures, aviation and rail construction.



**Kevin Holt, PE, CCM** is a program and construction management professional with over 30 years of experience in transportation, infrastructure, public facilities, aviation, and public works.

Arcadis has been providing CM Upon Request for Non Roadway projects for the Illinois Tollway



#### FACTS

Founded in the Netherlands in 1888, Arcadis now operates in Europe, the Middle East, Asia, Australia and the Americas.

We have more than

**27,875**

Employees in

**350**

Offices operating in over

**70**

Countries.

WORLDWIDE

Local contact:

[phoebe.peterson@arcadis.com](mailto:phoebe.peterson@arcadis.com)

Arcadis has a contract for CM Task Orders with Metra



# AT-A-GLANCE

COMPANY OVERVIEW AND QUALIFICATIONS



Ardmore Roderick

Ardmore Roderick is a full-service engineering firm providing design, program management, construction management, and land surveying services to government and private transportation, utility, and facility industries.

## OUR MARKETS



AVIATION



TRANSIT & RAIL



UTILITIES



TRANSPORTATION



BUILDINGS & FACILITIES

## OUR SERVICES



Construction  
Inspection



Utilities  
Distribution  
Design



Highway &  
Road Design



Drainage  
Design



ITS Design



Construction  
Management



Program  
Management



Subsurface  
Utilities  
Engineering



Design-Build



Structural  
Engineering



Survey



Civil Site  
Design

## PRE-QUALIFICATIONS

### Illinois Department of Transportation (IDOT)

- Structures - Highway: Typical
- Structures - Highway: Simple
- Structures - Railroad
- Special Services - Surveying
- Location Design Studies - Rehabilitation
- Location Design Studies - Major Rehabilitation
- Highways - Roads and Streets
- Special Services - Sanitary
- Special Studies - Traffic Studies
- Special Studies - Location Drainage
- Special Services - Construction Inspection
- Highways - Freeways
- Special Studies - Project Controls
- Special Studies - Safety
- Special Services - Subsurface Utility Engineering
- Airports - Construction Inspection
- Special Studies - Traffic Signals

### City of Chicago Department of Transportation (CDOT)

### Capital Development Board (CDB)

### DuPage County Division of Transportation (DuDOT)

### Indiana Department of Transportation (INDOT)

- Topographic Survey Data Collection
- Regular Bridge Inspection
- Complex Bridge Inspection
- Utility Coordination
- Construction Inspection
- Non-complex Roadway Design

### Florida Department of Transportation (FDOT)

- Minor Highway Design
- Traffic Engineering Studies
- Signing, Pavement Marking & Channelization
- Roadway Construction & Engineering Inspection
- Minor Bridge & Miscellaneous Structures CEI
- Land Planning/Engineering

### Wisconsin Department of Transportation (WisDOT)

- Bridges
- Construction Management
- Highways, Streets, Airport Paving, Parking Lots
- ITS
- Structural Design
- Survey

# Construction Technology & Material Evaluation (CTME)

---

## C O M P A N Y S T A T E M E N T

Construction Technology & Material (CTME) is a certified M/DBE, DBE and BEP consulting firm. The company provides construction engineering and material evaluation however it specializes in Non-Destructive Evaluation (NDE). We have over 20 years of experience in this field. CTME's construction engineering and techniques are used to help uncover and quantify "unseen" conditions in the ground. The technology utilized by CTME can uncover the following objects:

- Underground utilities (water, gas, electric & others)
- Underground storage tanks (UST)
- Graves in cemeteries
- Washed out and sinkholes
- Buried manholes
- Others

The technology utilized by CTME also has the capability of uncovering conditions in existing concrete structures by being able to locate:

- Reinforce steel
- Post-tensioning strand (cable)
- Embedded utility lines (electric, water, gas, and fiber optic, etc...)

CTME has the ability to determine the conditions of existing structures by providing:

- Rapid structures screening for anomalous/irregularity conditions.
- In place concrete strength evaluation.
- Concrete quality control for code compliance.
- Rebar sizing for diameter measurement.
- Concrete depth of cover evaluation.
- Rebar mapping for structure integrity – load analysis.
- Post-tensioning cable mapping for load analysis.
- Pavement/concrete thickness verification
- Concrete delamination (Corrosion) for structure life expectancy determination.
- Crack depth for structure integrity/efficiency.

CTME consist of engineers that provide problem solving skills to government-controlled entities and inspection agencies. Our services add value for structural and civil engineers to capture the actual structure conditions for design and retrofit purposes.



## Chicago Testing Laboratory, Inc.

30W114 Butterfield Road, Warrenville, IL 60555 p 630.393.2851 f 630.393.2857  
w [chicagotestinglab.com](http://chicagotestinglab.com) e [info@chicagotestinglab.com](mailto:info@chicagotestinglab.com)

Testing • Inspection • Training • Consulting • Research • Geotechnical

Chicago Testing Laboratory was formed in 1912 to provide consulting engineering and construction materials testing and inspection services to municipalities, government agencies and private clients. We specialize in the areas of geotechnical engineering and field and laboratory testing of construction materials with a focus on roadway projects.

### Chicago Testing Laboratory:

- Is a professional engineering consultant in the State of Illinois, and is prequalified by the Illinois Department of Transportation in the following categories:
  - Special Services – Quality Assurance PCC, HMA & Aggregate
  - Special Services – Construction Inspection
  - Geotechnical Services – Structure Geotechnical Reports (SGR)
  - Geotechnical Services – Subsurface Explorations
  - Geotechnical Services – General Geotechnical Services
- Holds accreditations from CCRL, AASHTO, USACE and IDOT
- Has worked as a sub-consultant to numerous prime consultants on Illinois DOT and Illinois State Toll Highway Authority (ISTHA) projects and provides materials inspection for dozens of villages and municipalities.
- Provides construction and materials training to agency, contractor and consultant personnel throughout the United States and overseas.

CTL currently operates from our local office in Warrenville, Illinois. CTL maintains a staff of 35 personnel, which includes 4 engineers and 25 technicians, along with administrative support staff. CTL is committed to the principles of quality, from design through construction. CTL strives to:

- Ensure customer satisfaction through meaningful process control
- Maintain a high level of Total Quality Management
- Maximize the quality and serviceability of today's construction projects

CTL teaches and develops construction and materials testing training programs, including the IDOT QC/QA certification training courses. Inside and outside of Illinois, CTL has taught several courses to various agencies and industry on proper use of soils, asphalt, concrete, and other construction materials.

CTL research activities have resulted in several ASTM test specifications, including the Abson asphalt recovery test (ASTM D1856) and the Root-Tunnicliff method for evaluating stripping of asphalt mixtures (ASTM D4867). Numerous other special tests and equipment have been developed in connection with special investigations and research studies for various clients and technical societies.

# Chicago Testing Laboratory

was formed in 1912 to provide consulting engineering and construction materials testing and inspection services to municipalities, government agencies and private clients. We specialize in the areas of geotechnical engineering and field and laboratory testing of construction materials with a focus on roadway projects.

CTL has experts on staff with the collective experience, knowledge, and resources that bring value to a team in many ways. We are uniquely positioned to offer engineering, laboratory, inspection, testing, and specialty support and services to a project.



**CHICAGO TESTING LABORATORY** is a professional engineering consultant in the State of Illinois, and is prequalified by the Illinois Department of Transportation in the following categories:

- ✓ **Special Services:** Quality Assurance PCC, HMA & Aggregate
- ✓ **Special Services:** Construction Inspection
- ✓ **Geotechnical Services:** Structure Geotechnical Reports (SGR)
- ✓ **Geotechnical Services:** Subsurface Explorations
- ✓ **Geotechnical Services:** General Geotechnical Services

## Additionally, CTL

- Holds accreditations from **AASHTO re:source**, **CCRL** and **USACE**
- Has worked as a Prime and sub-consultant to numerous firms on **Illinois State Toll Highway Authority (ISTHA)** and **Illinois DOT projects** and provides materials inspection for dozens of villages and municipalities.
- Provides construction and materials training to agency, contractor, and consultant personnel throughout the United States and overseas.

CTL currently operates from our local office in Warrenville, Illinois. CTL maintains a staff of 35 personnel, which includes **4 engineers** and **25 technicians**, along with administrative support staff. CTL is committed to the principles of quality, from design through construction.



## CTL STRIVES TO:

- ✓ Ensure customer satisfaction through meaningful process control
- ✓ Maintain a high level of Total Quality Management
- ✓ Maximize the quality and serviceability of today's construction projects

## Key Personnel

**Eric Brown, Director of Field Services** [ebrown@chicagotestinglab.com](mailto:ebrown@chicagotestinglab.com)

**Jeffrey Rothamer, P.E., Director of Technical Services** [jrothamer@chicagotestinglab.com](mailto:jrothamer@chicagotestinglab.com)

**Riyad Wahab, PhD, P.E., Senior Geotechnical Engineer** [rwahab@chicagotestinglab.com](mailto:rwahab@chicagotestinglab.com)

**Abdul Dahhan, P.E., Vice President** [adahhan@chicagotestinglab.com](mailto:adahhan@chicagotestinglab.com)

**Paul Yerkes, President** [pyerkes@chicagotestinglab.com](mailto:pyerkes@chicagotestinglab.com)



# CAPABILITY STATEMENT

Donna C. Bryant, President  
180 North LaSalle Street, St. 3700  
Chicago, IL 60601  
Office: 312-368-1700 | Cell: 708-828-4321  
www.b2bssi.com | donna@b2bssi.com

PROFESSIONAL      EXPERIENCED      RELIABLE



## CORE COMPETENCIES

B2B Strategic Solutions, Inc. is a management consulting firm with more than twenty years of industry experience. We have achieved consulting success in the education, public sector and non-profit industries. The experience and skills of our team help our clients meet challenges, improve efficiencies, boost productivity, manage large software implementations and increase technology expertise.

Our consulting services include:



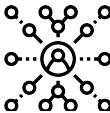
Project and  
Organizational Change  
Management



Diversity, Equity and  
Inclusion Consulting



K-20 Educational  
Consulting



Training and  
Knowledge Transfer



Emergency Management  
and Business Continuity

## WHAT MAKES B2B STRATEGIC SOLUTIONS DIFFERENT?

B2B is known for providing professional, experienced and reliable consulting services to our clients. We work diligently to enhance relationships between our customers, business partners and consultants. Extensive experience and a documented track record of reliability allows B2B to deploy professional consultants across all industries and business functions to meet the requirements of their clients and partners. Our management consulting approach encourages collaboration, so the right people, skills and technologies are put in place to achieve positive change, growth and improvement for each and every client we serve.

### COMPANY DATA

- Founded in 2003
- M/WBE/BEP in IL, IN, WI, NY
- DUNS #138436089
- National Presence
- Mature Company and Leadership
- Subject Matter Experts

### PAST PERFORMANCE

- AON, City of Chicago, Cook County and State of Illinois
- National Able, Community Care Alliance of Illinois
- Chicago, Texas, New York, Indiana and Milwaukee Public Schools
- Chicago City Colleges, University of Illinois-Champaign
- McGraw-Hill Education, Data Recognition Corporation
- Chicago Housing Authority and Chicago Transit Authority
- Gartner, Inc., Metropolitan Pier & Exposition

### PERTINENT CODES

NAICS	NIGP
541611	91875
611430	92435
611420	92091
922190	96150
561110	96102

## FIRM OVERVIEW

Comprehensive Construction Consulting, Inc. (CCC) is an African-American owned construction consulting firm founded in 2007. From humble beginnings, CCC has grown from a three-person firm to an operation with a staff of more than 30 professionals delivering planning and construction consulting services.

CCC has consistently delivered high quality construction consulting services on a range of buildings, utilities and transportation projects from concept to close-out. We focus on delivering value in all phases of the project life cycle by controlling cost, time, quality and scope to ensure the on-time, on budget successful completion of projects.

## CORE SERVICES

- ◆ CLAIMS MANAGEMENT
- ◆ CONSTRUCTION INSPECTION
- ◆ CONSTRUCTION PROJECT MANAGEMENT
- ◆ CONSTRUCTION PROGRAM MANAGEMENT
- ◆ CONSTRUCTABILITY REVIEW
- ◆ COST ESTIMATING
- ◆ DESIGN REVIEW
- ◆ FACILITIES ASSESSMENT
- ◆ OWNERS REPRESENTATION
- ◆ PHASE I & III
- ◆ PROJECT CONTROLS
- ◆ PROJECT SCHEDULING
- ◆ PUBLIC COMMUNICATIONS & OUTREACH
- ◆ RISK ASSESSMENT

## CERTIFICATIONS & PREQUALIFICATIONS

- ◆ City of Chicago Disadvantaged Business Enterprise
- ◆ Cook County Minority Business Enterprise
- ◆ Capital Development Board Prequalified: Construction Management
- ◆ Cook County Prequalified: Construction Management
- ◆ Illinois Department of Transportation Prequalified: Construction Inspection
- ◆ LEED AP Certified: New Construction
- ◆ Registered Architects
- ◆ Registered Professional Engineering Firm in Illinois

## SECTORS/INDUSTRIES

- ◆ AVIATION
- ◆ BUILDINGS/ FACILITIES
- ◆ RAIL
- ◆ TRANSPORTATION
- ◆ UTILITIES

## CLIENTS

- ◆ Capital Development Board
- ◆ Chicago Department of Aviation
- ◆ Chicago Department of Transportation
- ◆ Chicago Department of Water Management
- ◆ Chicago Housing Authority
- ◆ Chicago Public Schools
- ◆ Chicago Transit Authority
- ◆ City of Chicago
- ◆ ComEd/ Exelon
- ◆ Cook County Health and Hospitals Systems
- ◆ Cook County Dept. of Corrections
- ◆ Cook County Dept. of Transportation & Highways
- ◆ Illinois Tollway
- ◆ Public Building Commission of Chicago
- ◆ Metropolitan Water Reclamation District of Greater Chicago

# COLLINS ENGINEERS, INC.

- Established in 1979
- Ranked on ENR's Top 500 Design Firms List
- Licensed in all 50 States

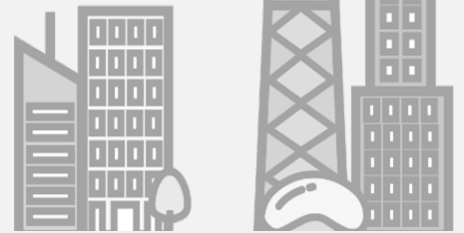
**250** Employees   **12** Licensed Structural Engineers   **51** Licensed Illinois Professional Engineers

Collins Engineers, Inc. (Collins) is a local Veteran Owned Small Business (VOSB) built on expertise in all phases of transportation projects. Collins takes great pride in providing realistic, honest solutions to state and local governments, railroads, transit systems, the construction industry, and other commercial owners. Collins' project experience is diverse; however, the assessment, analysis, design and construction management of transportation infrastructure remains the common thread. From the preparation of bridge condition reports and bridge rehabilitation plans to the construction management of major highway interchanges, Collins provides a proactive, service-oriented approach focusing on our clients' needs.



**CERTIFIED VETERANS OWNED  
SMALL BUSINESS (VOSB)**

Headquartered in  
**Chicago, Illinois**



**24 OFFICES NATIONWIDE**

## COLLINS TOLLWAY PROJECT HIGHLIGHTS



EOWA Meacham Rd/Medinah Rd to Rohwling Rd CM



I-94 Pavement & Structural Rehab



Mile Long Stiffening Truss



## IDOT PREQUALIFICATIONS

### Structures:

- Highway: Simple
- Highway: Typical
- Highway: Advanced Typical
- Highway: Complex
- Railroad
- Moveable

### Location Design Studies:

- Rehabilitation
- Reconstruction/  
Major  
Rehabilitation
- New  
Construction/  
Major  
Reconstruction

### Highways:

- Freeways
- Roads and Streets

### Special Services:

- Construction  
Inspection

### Special Studies:

- Traffic Studies
- Location Drainage
- Feasibility

### Hydraulic Reports:

- Waterways:  
Typical
- Waterways:  
Complex



DBE / MBE / SDB  
IDOT / ISTHA / CDOT Pre-Qualified

**CAGE Code:** 4TDL8

**DUNS Number:** 801990784

**NAICS Codes:**

- 541330
- 541370
- 237310
- 237110

**Clients:**

- IDOT
- ISTHA
- CDOT
- CTA
- MWRD
- City of Aurora
- City of Elgin
- Cook County
- DuPage County
- Kane County
- Village of Rosemont
- Village of Schaumburg
- AECOM
- Alfred Benesch
- Baxter & Woodman
- Bowman, Barrett & Associates
- Christopher B. Burke
- CivilTech
- ESI
- HNTB
- H.W. Lochner
- Jacobs
- Melvin Cohen
- Michael Baker
- Millennia
- WSP | Parsons Brinckerhoff
- Patrick Engineering
- Primera
- Stanley
- TranSystems
- V3 Companies
- Wight & Company

**Software:**

- Microstation
- GeoPak
- AutoCAD
- Land Desk
- AutoTurn
- HCS 2000
- TR 20
- HEC-HMS
- Flow Master
- Culvert Master
- RAM Concepts

**Contact:**

4260 Westbrook Dr., Suite 115  
Aurora, IL 60504  
Ph: (630) 780-2800  
Fax: (630) 556-5168

10 S. Riverside Plaza, Ste. 875  
Chicago, IL 60606  
Ph: (312) 473-3859

Email: [info@esgcorp.us](mailto:info@esgcorp.us)  
Website: [www.esgcorp.us](http://www.esgcorp.us)

## Capabilities Statement

Engineering Services Group, Inc. (ESG) is a multi-disciplined engineering DBE / MBE/SDB firm, providing services in the fields of program management, construction management and consulting engineering services. ESG specializes in Transportation, Civil Engineering, and Facilities projects.

A certified DBE with the States of Illinois, Indiana and Wisconsin, ESG is also a certified MBE with the City of Chicago, Cook County, MWRD, City of Rockford and CMS - as well as a certified SDB with SBA.

ESG is pre-qualified with IDOT in several categories including: Roads and Streets, Traffic Studies, Traffic Signals, Freeways, Construction Inspections and Landscape Architecture. ESG is also pre-qualified with the Cook County, DuPage County and Kane County DOT (KDOT).

## Core Competencies

- ⇒ Multi-disciplined firm specializing in transportation, traffic, civil, and bridge engineering
- ⇒ Pragmatic approach to projects subsuming project scope, budget, life, and future maintenance

## Past Projects

As Prime Consultant:

- ⇒ Construction Management Services Upon Request with ISTHA, 2015-2017
- ⇒ Construction Project Closeout with CDOT, 2015-2018
- ⇒ Jane Addams Memorial Tollway at Lee Street, Interchange with ISTHA, 2013-2015
- ⇒ IL-178 Utica Realignment with IDOT, 2011-2013
- ⇒ Job Order Contract Program Management Support with ISTHA, 2017-2021

As Sub Consultant:

- ⇒ Arterial Street Resurfacing & ADA Ramp Program—Citywide, with CDOT and Wight & Co., 2014-current
- ⇒ US 34 at Canadian National Railroad (overpass) with IDOT, 2014-2016

A detailed list of projects and clients can be viewed at <http://www.esgcorp.us>

# CAPABILITIES STATEMENT



## COMPANY

### **Enspyre Management Services LLC**

Corneilius Hill, President  
1009 Berkshire Dr.  
Matteson, IL 60443  
Phone: (708) 466-1985  
Email: Hillc@enspyrellc.com

## NAICS CODES

541611 – Administrative Management and General Management Consulting Services  
611420 – Computer Training  
541513 – Computer Facilities Management Services  
541519 – Other Computer Related Services  
811212 – Computer and Office Machine Repair and Maintenance  
561210 – Facilities Support Services  
2362 – Nonresidential Building Construction  
236210 – Industrial Building Construction  
236220 – Commercial and Institutional Building Construction  
238220 – Plumbing, Heating, and Air-Conditioning Contractors  
541618 – Other Management Consulting Services  
238210 – Electrical Contractors and Other Wiring Installation Contractors  
541512 – Computer Systems Design Services  
541611 – Administrative Management and General Management Consulting Services

**CAGE CODE:** 82007

**DUNS:** 081128521

## CERTIFICATIONS AND REGISTRATIONS

- ◆ SBA
- ◆ Illinois-DBE
- ◆ City of Chicago-MBE
- ◆ Business Enterprise Program (BEP)-Illinois
- ◆ Small Business Set Aside-Illinois
- ◆ System for Award Management
- ◆ Project Management Process Waterfall
- ◆ Agile/SDLC/APQP/NPD
- ◆ Project Management Office Development
- ◆ Hardware/Software Installs
- ◆ Systems Launch / Implementation
- ◆ Data Retrieval / Data Manipulation
- ◆ Change Management
- ◆ Business Intelligence Reporting
- ◆ ERP Implementation/Consulting
- ◆ Problem Resolution / Troubleshooting



## DIFFERENTIATORS

- Team has a combined 20 years in the Information Technology/Construction Industry.
- Technology should be accounted for in every commercial project. We make sure not to overlook this important aspect during construction.
- During the pre-construction and construction process, our electricians and HVAC technicians make sure to recommend modern processes to avoid future infrastructure retrofitting.
- Post construction, we assist with installation of any computer and peripheral devices.

## PAST PERFORMANCE

**Data Warehouse** – Determined business objectives. collected and analyzed information from multiple stakeholders. Identified core business processes. Constructed a conceptual data model. Located data sources. Planned data transformations, set tracking duration. Identified Business Intelligence Software for reporting.

**Furnace Data Extraction** – Extended web services to accommodate a new furnace to add jobs and furnace load recipes from Plex. Created an SQL Server database on a central server to store recipes. Created specification for a unique part and used data analytics to add part specifications to over four thousand part operations.

**Project Manager** – Worked with small and large manufacturing clients during the implementation of Plex ERP. Identified risks and systemic problems during full-life cycle projects, lead ERP teams, optimized training and VisionPlex screen design. Communicated complex technical information with senior project stakeholders and closely monitor data quality and integrity during transfer from legacy to ERP systems.

**ERP Implementation** – Spearheaded implementation of an automated assembly machine designed to produce labels using ERP data. Created Plex modules and workflows using end-user feedback and created third-party ready data which was sent to a central cost accounting system (SAP). Clients recognized the immediate process improvement resulting from moving to a cloud system, including reduced spend on server leases.

## CORE COMPETENCIES

- ◆ **Construction Management**
  - General Construction
  - HVAC
  - Electrical
- ◆ **Information Technology**
  - Hardware/Software Installation
  - Data Retrieval and Manipulation (SQL)
  - Network Installation and Configuration
  - Data Warehouse Design and Implementation
  - Enterprise Resource Planner (ERP) -Implementation and Launch
  - Business Intelligence-Selection and Implementation
- ◆ **Project Management**
  - Project Management Processes Waterfall/Agile/SDLC/APQP/NPD
  - Problem Resolution / Troubleshooting
  - Project Management Office (PMO) Development
  - Change Management

**The Feather Group is  
a Native American owned  
Full Service Real Estate  
Consulting firm.**

# **FEATHER** GROUP LLC

## **Capabilities:**

Our team of strategic partners, industry and market leaders possess the exceptional knowledge and experience to assist in addressing our clients real estate needs.

### **Services include:**

- Market Studies
- Marketability Studies
- Financial Feasibility Studies
- Highest and Best Use Analysis
- Land Valuation Reports
- Commercial Property Valuation Reports
- Residential Valuation Reports
- Land Acquisition/Assemblage
- Development Consulting
- Due Diligence
- Right of Way
- Eminent Domain

## **Projects:**

### **Department of Interior Interior Business Center**

Market Rental Study for the Cheyenne River Reservation

Market Value for 38 Parcels for the Cheyenne River Agency

Market Value for 50 Parcels on the Winnebago Reservation Nebraska

Market Value for 12 Parcels on the Winnebago Reservation Nebraska

## **NACIS Codes:**

- 541618 - OTHER MANAGEMENT CONSULTING SERVICES
- 531390 - OTHER ACTIVITIES RELATED TO REAL ESTATE
- 531320 - OFFICES OF REAL ESTATE APPRAISERS
- 541611 - ADMINISTRATIVE MANAGEMENT  
AND GENERAL MANAGEMENT CONSULTING SERVICES

## **Contact**

Paul Arnold  
Managing Director  
800 S. Wells St. Suite 1422  
Chicago, IL 60607  
312-341-2526  
312-399-1071 Mobile  
[parnold@feathergrp.com](mailto:parnold@feathergrp.com)  
[www.feathergrp.com](http://www.feathergrp.com)

## **Company Data**

DUNS Number . 076352768  
Cage Code - 7 MQR8  
Socio-Economic Certifications  
Native American Owned  
Small Business Entity



# GARZA KARHOFF ENGINEERING, LLC

## COMPANY PROFILE

Garza Karhoff Engineering, LLC (GKE) is a Hispanic-woman owned business providing structural and civil engineering, as well as construction management consulting services in the transportation and building sectors.

Our staff of dedicated engineers and project managers currently works with leading engineering firms on various projects throughout the Chicagoland area. Our clients include IDOT, Metra, CDA, CDOT, CTA, the Illinois Tollway, and various building/facility owners.

Our mission is to establish lasting relationships with our clients by exceeding their expectations through providing the highest quality professional services on schedule and within budget. We strive to ensure the growth and longevity of our company through repeat and referral business achieved by client satisfaction.

GKE is a member of the Hispanic American Construction Industry Association (HACIA), the American Council of Engineering Companies of Illinois (ACEC-IL) and Structural Engineers Association of Illinois (SEAOI).

## PRE-QUALIFICATIONS:

### Illinois Department of Transportation:

- Location Design Studies-Rehabilitation
- Highways—Roads and Streets
- Structures—Highway: Simple
- Structures—Highway: Typical

### Capital Development Board:

- Structural Engineering
- Civil Engineering

### Kane County:

- Highways
- Location/Design Studies
- Structures

## CERTIFICATIONS:

DBE—I.D.O.T. UCP Certification  
MBE/WBE- City of Chicago  
WMBE—State of Illinois Central Management Services

## PROFESSIONAL SERVICES

### Transportation:

- ♦ Bridge Design
- ♦ Bridge Inspections
- ♦ Structural Analysis and Design
- ♦ Roadway Design
- ♦ Infrastructure Planning
- ♦ Airport/Airfield Design
- ♦ Construction Management

### Buildings:

- ♦ Building Design
- ♦ Structural Analysis

### Markets:

- ♦ Federal Government
- ♦ Municipal Government
- ♦ Private Development
- ♦ Transportation
- ♦ Telecommunications

**120 N. LaSalle St., Suite 1400**  
**Chicago, IL 60602**  
**[www.gke-llc.com](http://www.gke-llc.com)**

Gasperec Elberts Consulting was founded by Megan Elberts, PE and Lisa Gasperec, PE who bring over 35 years of experience in many facets of civil engineering to the firm. Their philosophy is to understand the unique requirements of each project while providing each client with a level of personal service and professionalism that they have provided throughout their careers.

## CONSTRUCTION ENGINEERING



Lisa Gasperec, PE is a principal at Gasperec Elberts Consulting with almost 25 years of experience in the civil engineering field. While having knowledge of all facets of civil engineering, the majority of her career includes expertise in construction engineering, which has allowed her to understand all stages of public works projects from planning to project close-out. She has worked on varied projects from residential street and utility improvements to large scale interstate projects.

## STORMWATER/HYDROLOGY



Megan Elberts, PE is the managing principal of Gasperec Elberts Consulting, LLC with 11 years of experience in water resources engineering, including green infrastructure, water quality and stormwater management. Megan has experience with hydraulics and hydrology modeling, base flood elevation determinations and permitting water resources projects in Northeastern Illinois.

## CIVIL ENGINEERING DESIGN



Michael Martin, PE, guides projects to successful outcomes with an emphasis on producing quality deliverables and treating the project team and stakeholders with courtesy and candor. Mike has had the privilege of working on a range of projects including studies and design of highway and street improvements, new construction, and high-profile design-build transportation contracts. Several of these projects have won state and national awards for excellence and merit.

## PROFESSIONAL LAND SURVEYING



Russell Olsen, PLS is our Survey Manager and has more than 30 years experience as a Professional Land Surveyor in the Chicago Metropolitan area. He has completed numerous Illinois Department of Transportation land acquisition and topographic surveys, Cook County Highway Department Plats of Highway and various other ALTA surveys, Plats of Easements and legal descriptions.

**GEC is proud to be a Certified Disadvantaged Business Enterprise (DBE) and Woman Owned Business Enterprise (WBE)**

**Gasperec Elberts Consulting, LLC provides civil engineering and surveying services from the planning phases through construction. We pride ourselves on serving our clients with a professional approach and thoughtful attention.**

## IDOT PRE-QUALIFICATION

Highways

- Roads and Streets
- Freeways

Location Design Studies

- Rehabilitation
- Reconstruction/Major Rehabilitation

Special Services

- Construction Inspection
- Surveying

Special Studies

- Location Drainage
- Traffic Studies
- Safety

## CERTIFICATIONS

Disadvantaged Business Enterprise  
Woman Owned Business Enterprise

## PROFESSIONAL AFFILIATIONS

ACEC – IL Chapter

ASCE – IL Section

Illinois Road & Transportation  
Builders Association

Women's Transportation  
Seminar – Greater Chicago

National Society  
of Professional Surveyors

Illinois GIS Association

# CAPABILITY STATEMENT



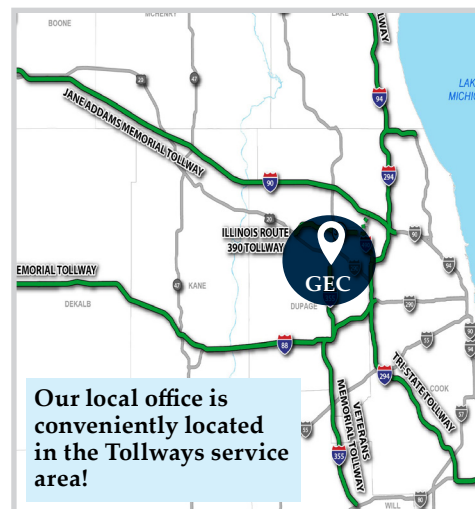
GASPEREC ELBERTS  
CONSULTING

**GASPEREC ELBERTS CONSULTING, LLC (GEC)** provides civil engineering and surveying services to municipalities and state agencies throughout the Chicagoland Area. Lisa Gasperec, PE and Megan Elberts, PE founded GEC in 2017 to provide high-quality, professional, and cost-effective engineering and surveying services. Our dedicated staff of more than 20 talented engineers, surveyors, technicians, and support personnel incorporates innovative techniques along with tried and true processes. We strive to build community value with every project we complete. **Gasperec Elberts Consulting, LLC is proudly certified as a Women-Owned Business Enterprise (WBE) and a Disadvantaged Business Enterprise (DBE).**



We value our diverse, well-rounded GEC team. As a certified woman-owned, disadvantaged business enterprise, we are committed to efforts that promote diversity.

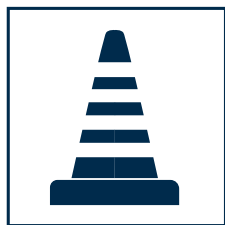
**83% of GEC professionally licensed staff are women.**



**Our local office is conveniently located in the Tollways service area!**

## CAPABILITIES & EXPERTISE

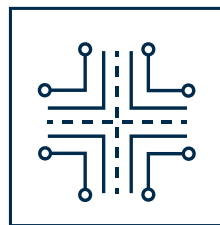
At GEC, our philosophy is to understand the unique requirements of each project while providing each client with a level of personal service and professionalism that our team has provided throughout their careers. Our team offers expert services that comes from the cohesive and cooperative work effort gained from having expertise in numerous disciplines.



Construction  
Management



Land  
Surveying

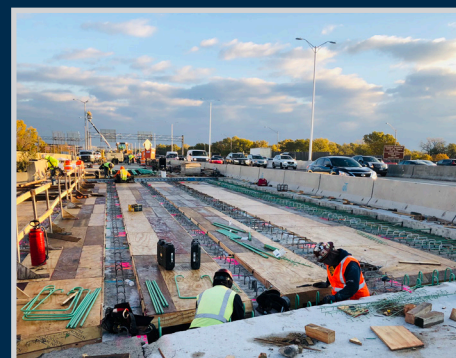


Transportation



Stormwater

## ILLINOIS TOLLWAY EXPERIENCE



## IDOT PRE-QUALIFICATION

### Highways

- Roads and Streets
- Freeways

### Location Design Studies

- Rehabilitation
- Reconstruction/Major Rehabilitation

### Special Services

- Construction Inspection
- Surveying

### Special Studies

- Location Drainage
- Traffic Studies
- Safety



**LET'S CONNECT!**

Megan Elberts, PE P: 847.868.1833 E: melberts@geconsultllc.com 1401 Branding Avenue, Suite 230, Downers Grove, IL 60515

Gonzalez regularly performs Construction Management work for Departments of Transportation throughout the Midwest. Our project portfolio includes 14 selections as Prime Consultant for IDOT, 2 Prime selection for the Illinois Tollway, and several dozen subconsultant selections for ISTHA, IDOT, CDOT, MoDOT, and others.

Extensive project management experience and expertise allows the Gonzalez team to effectively assist the owners and contractors of public works projects and commercial private sector jobs with construction management services. Our staff of seasoned professionals monitor the contractor's progress and compliance with contract documents to ensure proper construction techniques, materials, equipment, and personnel are utilized throughout the project schedule. During the construction phase of a project, our team provides close supervision and related services to coordinate the project with the owner, design professionals, and subconsultants.

### ISTHA Prime Selections:

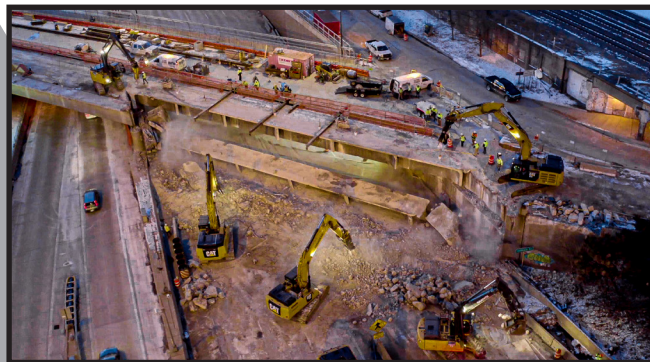
PSB 18-1/10: Tri-State Tollway Construction Upon Request  
PSB 16-1/1: I-90 and Systemwide Construction Upon Request

### IDOT Prime Selections:

PTB 198/17: IL 47 over I-55  
PTB 196/7: District 1 Phase II Various/Various  
PTB 194/28: District 3 Phase III Various/Various  
PTB 192/6: I-94 Kennedy Expwy @ Montrose Ave.  
PTB 183/9: I-90 @ I-290/Congress Parkway  
PTB 172/21: Rte 157 over Schoenberger Creek  
PTB 169/32: District 8 Phase III Various/Various  
PTB 164/7: Joliet Movable Bridges  
PTB 161/32: IL 15 over IL 13 and ICG Railroad  
PTB 156/51: District 8 Phase III Various/Various  
PTB 154/46: District 8 Phase III Various/Various  
PTB 153/52: I-64 over Metrolink  
PTB 151/50: D8 Phase III Various/Various  
PTB 147/39: Mississippi River Bridge  
PTB 139/17: D8 Phase III Various/Various

### PHASE III SERVICES

- Construction Management
- Construction Inspection
- Documentation of Contract Quantities
- NACE III Paint Inspection
- QC/QA
- CMMS
- Construction Layout
- Constructability Review



### PREQUALIFICATIONS

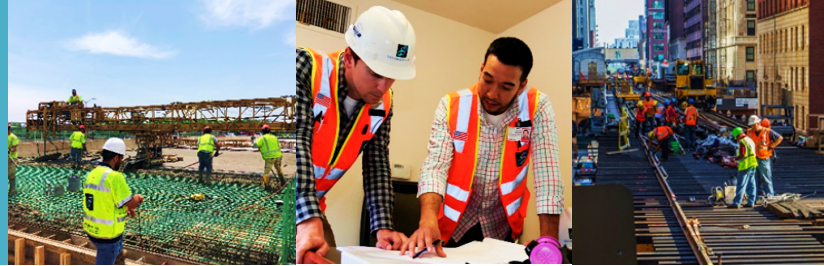
- Construction Inspection
- Construction Inspection - Airports
- Roads & Streets
- Freeways
- Structures: Simple
- Structures: Typical
- General Geotechnical Services
- Structure Geotechnical Reports
- Survey
- Traffic Studies
- Traffic Signals
- Rehabilitation
- Major Rehabilitation
- Location Drainage
- Pump Stations
- Waterways: Typical

**DBE/MBE CERTIFIED**

[www.gonzalezcos.com](http://www.gonzalezcos.com)

# GSG CONSULTANTS, INC.

735 Remington Rd, Schaumburg, IL 60173  
Tel: 630.994.2600, [www.gsg-consultants.com](http://www.gsg-consultants.com)



GSG Consultants, Inc. (GSG), is a Hispanic-Owned, MBE/DBE certified, infrastructure engineering and scientific consulting firm. For nearly 30 years, GSG has been serving public and private clients in the Chicagoland area. GSG is headquartered in Schaumburg, Illinois, with branch offices in Chicago and Springfield.

GSG's mission is to help our clients manage risk, reduce design and construction costs, and protect human health and the environment by delivering strategic, sustainable, and technically sound services. We have earned a reputation for providing outstanding professional services in the most time-sensitive environments. We maintain a staff of **over 120 technical professionals** delivering planning, design, and construction management services to government agencies and private clients throughout the Midwest region.

GSG has played a key role in shaping the infrastructure of the Midwest. We have earned a reputation for providing outstanding and accurate services in some of the most demanding environments on time-sensitive projects.



## Certifications

- Disadvantaged Business Enterprise (**DBE**)
- Minority Business Enterprise (**MBE**)



## IDOT Prequalifications

- **Construction Inspection**
- **Geotechnical Services:** Complex Geotech/ Major Foundations, Structure Geotechnical Reports, General, Geotechnical Services, Subsurface Explorations
- **Highways:** Freeways and Roads and Streets
- **Hydraulic Reports - Waterway:** Complex and Typical
- **Location Drainage**
- **Location Design Studies** – Rehabilitation
- **Structures, Highway:** Simple and Typical
- **Hazardous Waste:** Simple
- **Asbestos Abatement Surveys**



## Services

- Geotechnical Engineering
- Construction Management
- Environmental Engineering
- Natural Resources
- Civil/Transportation
- Structural Design
- Program Management



## Markets Served

- Highways/Roadways/Bridges
- Municipalities
- Utilities/Energy
- Railroad & Mass Transit
- Aviation
- Industrial & Manufacturing
- Commercial/Public Buildings
- Educational Institutions
- Healthcare Facilities

Working with GSG means working with individuals who are committed to excellence and who strive to achieve the highest standard of quality by putting the client first. Each staff member understands that communicating effectively and providing total project commitment and follow-through are not goals to strive for but baseline of our performance. We are proud of the reputation we have established as a preferred service provider through our quality service and high standards.



Integrity | Quality | Reliability

## ABOUT HEY AND ASSOCIATES, INC.

Hey and Associates, Inc. (Hey) is a professional engineering, ecological consulting, and landscape architecture firm founded in 1976 to deliver comprehensive solutions to complex water resources and natural resources challenges. Over the last 40 years, the firm has grown to offer a full range of professional services.

Hey's multi-disciplinary staff of engineers, scientists, landscape architects and support staff collaborate to identify opportunities, design creative solutions, and implement projects that are grounded in the fundamental principles of water resources, environmental science, and sustainability. Regulatory requirements, constructability, cost effectiveness, and long-term management requirements are thoughtfully considered for all projects to ensure we meet our clients' expectations.

Hey can provide **experienced, available and highly qualified services** for Roadway Design, Landscape Architecture, Hydraulic Reports and Location Drainage Studies / Investigations, and Construction Inspection. We offer more than 45 years of experience and have offices in Chicago, Lake County, Illinois and Milwaukee Wisconsin. We are also a certified small business.

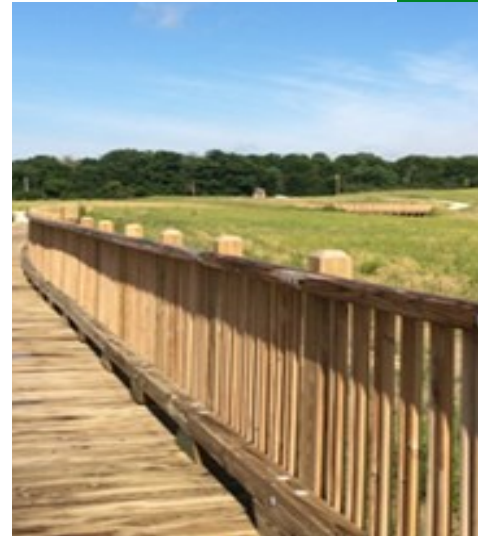
### **Hey has the following IDOT Prequalifications:**

- Highway – Roads and Streets
- Special Studies – Location Drainage
- Hydraulic Reports – Waterways: Typical
- Hydraulic Reports – Waterways: Complex
- Hydraulic Reports – Pump Stations
- Special Services – Landscape Architecture
- Special Services – Construction Inspection

### **Available and Qualified Staff:**

- **Transportation Studies/Design (Phase 1 and 2):** Five PEs and One EIT
- **Hydraulic Design for Waterways and Pump stations:** Eight PEs and Two EITs
- **Drainage Investigations:** Eight PEs and Two EITs
- **Wetland Delineation/Permitting:** Four wetland/environmental scientists
- **Threatened and Endangered Species Studies/Incidental Take Authorizations:** Four wetland/environmental scientists
- **Landscape Architecture:** One RLA, One RLA/certified arborist, and two certified arborists
- **Construction Inspection (Phase 3):** Staff with IDOT/Tollway Phase 3 experience:
  1. Three available inspectors/technicians with IDOT/Tollway experience including IDOT Documentation of Contract Quantities Certification and RE experience on IDOT/Tollway projects
  2. One staff member with IDOT Erosion Control Modules I, II, and III Certifications

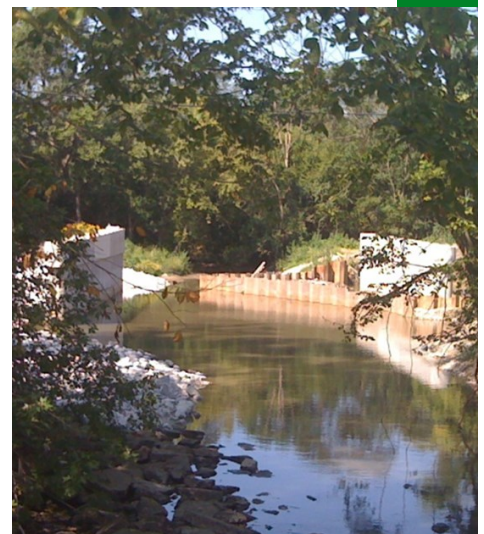
We are very excited to work with you. Please contact us for additional resumes or further information about our highly qualified and available planning/design/construction engineers. We can arrange a conference call in the near future to discuss teaming details. We look forward to hearing from you soon.



Illinois Toll Highway Authority - Pine Dunes - construction manager and resident for Elgin O'Hare Western Access wetland mitigation



IDOT Bureau of Programming Hydraulic Studies and Drainage Investigations



IDOT Bureau of Maintenance - ROW Vegetation Management, Wetland Permitting and In-Stream Work Plans

# Capability Statement / H K M Engineers, LLC



H K M Engineers is an infrastructure-focused **Construction management consulting firm** and **Dis-Advantaged small business (DBE)** based in Northeastern Illinois with significant experience providing high quality engineering services. Our team is comprised of Licensed Professional Engineers with support staff experienced in delivering infrastructure construction management, construction inspection, engineering services to public and private sector clients.



## Core Capabilities

Program Management  
Construction Management

## IDOT Prequalification

Special Services – Construction Inspection

## NAICS Codes

541330 – Civil Engineering Services  
237310 – CM Highway, Streets and Bridges

## Contact:

Abdul-Moiz Mohammed, PE  
President & CEO  
H K M Engineers, LLC  
(630) 673-5547  
abdul@hkmeng.com  
A Certified DBE Business

## Markets

Federal, State & Municipal Government  
Transportation & Utilities

## Certification

Dis-Advantaged small business (DBE), IDOT

## Professional Memberships

American Council of Engineering Companies (ACEC)  
Illinois Road and Transportation Builders Association (IRTBA)



Horner & Shifrin, Inc. is a multidisciplinary professional services firm with offices throughout Illinois and Missouri. We have expanded our services to meet our clients' continuously changing needs and keep ahead of technological developments. We offer engineering services in all phases of a project, including design, feasibility, planning, development, GIS mapping services and construction administration. We have the in-house capability to execute projects of major scope. Many of our projects have demonstrated innovative techniques and designs, for which we have received numerous professional awards and repeat assignments from clients. H&S is a 100-percent employee-owned corporation, managed by our officers and directors.

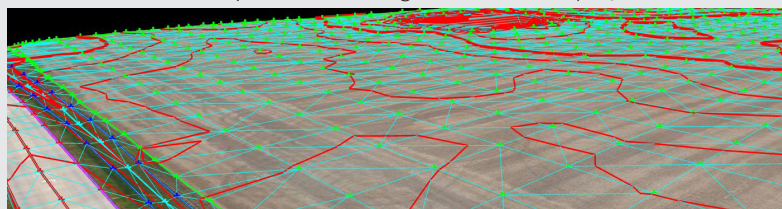
Horner & Shifrin's transportation engineering group specializes in a number of categories of services that could be utilized to best mentor DBE firms on future Tollway design and construction management projects both. These categories of work include:

- Interstate Highway / Expressway Design
- Structural Inspections / Design (*Certified inspectors at Chicago office*)
- Aerial surveying & 3D Modeling / Software (*See I-90 / I-490 project reference below*)
- Hydraulic Surveys / Drainage Design / Erosion Control

**Listed below are references to a number of recently completed projects that highlight these strengths:**

## JANE ADDAMS MEMORIAL TOLLWAY (I-90) & I-490 INTERCHANGE RAMPs | ILLINOIS TOLLWAY

H&S conducted aerial photogrammetry and used 3D modeling to estimate earthwork quantities on the new interchange construction project. A detailed report was created to compare these quantities with the as-built volumes obtained through traditional methods of measure and to help the Tollway find a new way to more accurately and easily measure earthwork quantities on large construction projects.



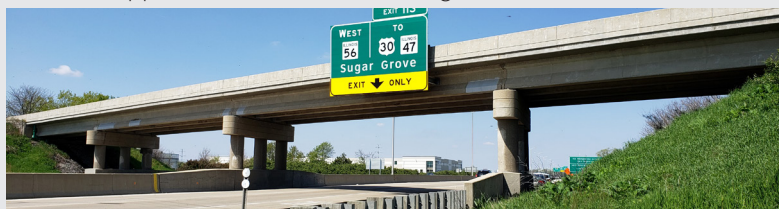
## I-255 REHABILITATION | IDOT, REGION 5, DISTRICT 8

I-255 was built in the mid-80s with no significant improvements since initial construction. H&S performed the phase II designs for the bridge and pavement rehabilitation of this urban expressway. Phase II plans were prepared in less than nine months to meet the accelerated schedule.



## DEERPATH ROAD BRIDGE OVER REAGAN MEMORIAL TOLLWAY (I-88) | ILLINOIS TOLLWAY

H&S performed Phase II design for reconstruction of Deerpath Road Bridge over Reagan Memorial Tollway (I-88). Provided public involvement, agency coordination, drainage design, and traffic management plans. Sam Mittal led the structural design of the recently completed Deerpath Rd. bridge over the Reagan Memorial Tollway. H&S will support the construction management of this structure.



## I-270 NORTH DESIGN-BUILD | MoDOT, ST. LOUIS AREA DISTRICT

H&S provided engineering design services for drainage, roadway, bridge, and hydraulics for MoDOT's \$270M I-270 North Design-Build Project. Led all drainage design for the 7-mile corridor. The complex design accounted for widening of I-270, interchange improvements, 1-way outer road conversions, and new outer roads improvements.



Areas of work in which H&S could best use the support of other firms include the following:

- Traffic Engineering Data Collection / Analysis
- Lighting / Electrical / ITS Engineering
- Traditional Surveying (*Resources out of St. Louis area offices*)
- Geotechnical Reports / Services
- Construction Inspection (*Documentation/Inspection Engineers and former Tollway Materials Engineer in the Chicago office*)



**IDOT  
Prequalification  
Categories**

**HIGHWAYS**  
Freeways  
Roads and Streets

**HYDRAULIC REPORTS**  
Pump Stations  
Waterways: Typical  
Waterways: Complex

**ENVIRONMENTAL REPORTS**  
Environmental Assessment  
Environmental Impact Statement

**STRUCTURES**  
Highway: Simple  
Highway: Typical  
Highway: Advanced Typical  
Highway: Complex

**SPECIAL SERVICES**  
Aerial Mapping  
Construction Inspection  
Electrical Engineering  
Mechanical  
Surveying

**LOCATION DESIGN STUDIES**  
New Const./Major Reconstruction  
Reconstruction/Major Rehab.  
Rehabilitation

**SPECIAL STUDIES**  
Feasibility  
Location Drainage  
Pump Stations  
Safety  
Traffic Signals/Traffic Studies  
Railway Engineering

***INTERRA, Inc. is Minority & DBE Certified for 25 years providing comprehensive Materials Quality Assurance and Testing, Geotechnical and Environmental Engineering, and Construction Management services.***

## OUR STORY

The Illinois Institute of Technology, located on the south side of Chicago, was the platform where partners would meet, grow up, and Chicago would play an integral role in founding INTERRA and its identity. The Chicago area provided opportunity for not only INTERRA leadership but for its employees, valued clientele, and people located in Chicago and around the U.S.

## INTERRA's TEAM

- Licensed Professional Engineers
- Certified Engineering Technicians with IDOT, ACI, PCI, and OSHA Certifications
- Experienced Staff with PhD's
- 55 Qualified Staff

## INTERRA's SERVICE PORTFOLIO

- AMRL(AASHTO)/CCRL/DOT/USACE Certified
- INTERRA has tested over 10 million tons of HMA and 10 million cyds of PCC on QC/QA projects

## Why INTERRA

- ✓ Tollway Experience
- ✓ Technology Focus
- ✓ Qualified Diverse Staff
- ✓ Prompt Communication
- ✓ Always Committed
- ✓ Integrity Focused
- ✓ Transparency
- ✓ Sustainability
- ✓ P4G Experience

## Services to our experience

### Quality Assurance Materials Inspection & Testing

- Systemwide IA Materials Engineering Contract
- Materials Subconsultant on various contracts on I-294, I-88, I-355 and I-90 corridors

### Materials Coordination

- I-88 Midway Rd. (RR-13-5662)
- EOWA I-490 at I-90 (I-18-4705)

### Construction Management Services

- CM Services Upon Request (Prime) (RR-18-4378) (Current)

### Geotechnical Engineering

- Geotechnical Services Upon Request (Prime) (RR-19-4480) (Current)
- Geotechnical Subconsultant on various contracts

**HACIA DBE Professional Services Firm of the Year (2020) \* Illinois Sustainability Award (2018)**

**USMCA MBE Firm of the Year (2018) \* IRTBA Green Industry Achievement Award (2017)**

Quality, Service, & Commitment

# CAPABILITY STATEMENT

# ITS ENGINEERING, LTD.

## Core Competencies

ITS Engineering (ITSE) is an Illinois Professional Engineering Corporation specializing in Traffic Monitoring & Management Systems (TMS) design, integration, testing, deployment and maintenance management. Deliverables include IFBs and RFPs for the acquisition of ITS systems as well as many technology scans and engineering reports.

## Past Performance

6 years experience as an IL Tollway subconsultant. Major clients include several top 25 ranked design engineering firms. ITSE has delivered several Phase I and Phase II engineering packages to the Illinois Tollway which have been successfully advertised and constructed. ITSE also reviews construction submittals for Phase III contracts.

## Differentiators

ITSE provides transportation systems infrastructure engineering, communications engineering, electrical engineering and system procurement support services to surface transportation agencies and prime consultants. It specializes in the most advanced technologies such as wireless (4G, 5G & DSRC) and fiber optic digital communications, non-intrusive vehicle sensing technologies including radar, magnetic and high resolution video, secure, fault tolerant networking, high performance edge computing, big data storage, large screen display systems, Active Traffic Management (ATM), multimodal mobility and Cooperative Automated Vehicle (CAV) systems. [ITSE designs roadside traffic monitoring, roadway lighting, and reliable power systems.](#)

Principal Engineer, **Darryl Dawson** (BS EE/CS - MIT, MBA - IIT—Technology Management), is an Illinois licensed professional engineer and ITE and IEEE member with over 45 years of industry experience, and has presented several technical papers on Cooperative Vehicle deployment at regional and national ITS conferences. Mr. Dawson is a former Illinois Tollway staff (ITS Deployment) engineer and former CTA general engineering consultant (GEC) contractor.

The company's Chicago office is located in the Technology Park on the campus of the Illinois Institute of Technology, where a highly skilled workforce of young transportation engineers and IT specialists is readily available. ITSE received the ACEC Special Achievement Award during the 2019 Engineering Excellence Awards Competition as a subconsultant for the Illinois Tollway's Tri-State Tollway Master Plan design study.

### Contact Information

Company	ITS Engineering Ltd.
Owner	Darryl Dawson, P. E.
Phone	312-731-9030
Email	ddawson@itsengineering-ltd.com

### Company Data

NAICS Codes	541330, 541512, 541519, 541614
Certifications	DBE, MBE, BEP, SB
Industry / Other Certifications	Cisco CCNA, BICSI
Company Footprint	Project experience in Illinois



# KAD ENGINEERING LLC

## FIRM OVERVIEW

KAD Engineering LLC provides construction management services to all transportation agencies including State, Counties and Villages in the Chicagoland area.

Our Company came into existence with a basic ideology of equality for all. We strive to provide opportunities to the most diverse work force who provides excellent quality work to our clients. Our Mission is to provide the best work by utilizing our experience and training together. Your success is our success. At KAD Engineering, excellence is just not a virtue, it's an attitude that reflects in each of our employees.

## OUR SERVICE

- Construction Management
- Contract administration
- Construction inspection
- Documentation and Project Closeout
- Erosion & Sediment Control Inspections
- Project control: time and schedule management
- Cost and budget monitoring
- Conflict resolution

## WHY US

- Participate in Illinois Tollway's Partnering for Growth (P4G) program with new firm
- Receive credit toward advertised DBE and/or VOSB goals by participating as mentor

## CERTIFICATION

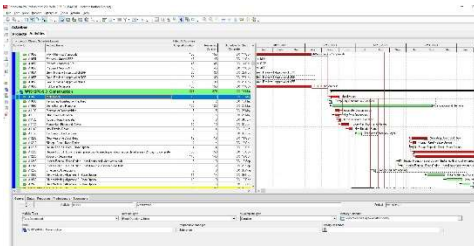
- IDOT Pre-qualification: Construction Inspection
- Illinois Professional Engineer License
- Documentation of Contract Quantities
- Erosion and Sediment Control Certification
- Pending certifications: WBE, MBE and DBE

## FORMER EMPLOYER

- Illinois Department of Transportation (IDOT)
- Illinois Tollway
- Cook County Highway Department

## WORKING RELATIONSHIP

- Illinois Department of Transportation (IDOT)
- Illinois Tollway
- Cook & Will County Highway Department
- Chicago Department of Transportation (CDOT)
- Local Agencies: counties, villages, cities and municipalities



## CAPABILITY STATEMENT PROJECT MANAGEMENT SERVICES

### ABOUT US

Kaletech LLC is a licensed professional design engineering firm offering services in Preconstruction, Planning and Supervision on all Infrastructure projects.

### OUR SERVICES

Project Management Services mainly include:

- Planning and Scheduling of work/Construction Progress using Primavera **P6 Version 20 and MS Project**
- Project Progress Monitoring, Corrective and Preventive Action Reports with Breakup of Engineering, Procurement,
- Construction Monitoring in line with the desired Project Schedule.
- Progress Reports, Progress S-curves & Functional Schedules
- Documentation Control & Management
- Supervision & Inspection Services
- Independent/ Third-party Scheduling Audits

### Pre-Construction

- Site Evaluation
- Estimating and Bidding Division
- Value-Added Engineering
- Building Information Modeling
- Quantity takeoffs from drawings.
- Cost planning for all types of buildings and infrastructure.

### Computer Aided Drafting

- AutoCAD, Microstation, and REVIT

### PARTIAL LIST OF CLIENTS

Sr.No	Name of Client	Services Offered
1	IES	USACE Scheduling 4 projects, Microstation
2	Northwest Engineering	Scheduling, CAD
3	ECODETROI	Scheduling Primavera P6, CAD
4	CARDINAL STATE LLC	TOLLWAY CAD

### IDOT PRE-QUALIFICATIONS

- Sanitary Engineering
- Airport Engineering
- Airport Construction

### CERTIFICATIONS

- City of Chicago MBE
- Illinois Department of Transportation DBE
- Illinois Capital Development Board
- Metropolitan Water Reclamation District Of Greater Chicago MBE
- Milwaukee Metropolitan Sanitary District MBE
- METRA DBE
- PACE DBE
- CTA DBE
- USACE Construction Quality Management for Contractors
- Primavera P6 Ver 20

### NAICS CODE

- 541330-Engineering Services
- 541620-Environmental Consultant Services
- 541620-Sanitary Engineering
- 541690-Technical Training

[www.kaletechllc.com](http://www.kaletechllc.com)

Lakeshore Engineering, LLC is a DBE/MBE firm founded in 2011 and received our IDOT prequalification in the Construction Inspection Category in the same year. Over the years, we worked on numerous ISTHA, CDOT, and Metra roadway and bridge construction projects as a subconsultant.

We also worked on two Metra Program Management Contracts as a prime consultant and are currently working as prime consultant on the NICTD Double Track (design-bid-build) and West Lake Corridor (design-build) Projects as part of their program management teams.

We are currently a subconsultant on IDOT CREATE 75th Street CIP Program Manager and CDOT Lincoln Yards Redevelopment PMO Projects.

Our firm's IDOT approved 2021 annual transportation fee capacity will be \$5.6 million.



In recognition of our work at Metra, we were presented with Metra's 2018 DBE award for outstanding work.

### Contact Information

Sainath Reddivari, PE  
President  
Phone: (312) 479-7611  
sainath@lse-eng.com

[www.lse-eng.com](http://www.lse-eng.com)

47 West Polk Street, Suite M-6  
Chicago, Illinois 60605

### Construction Inspection

#### Current and Past ISTHA Construction Inspection Experience as Subconsultant/Protégé

- EOWA, I-490, I-294 (Grand Avenue to Wolf Road) Project  
- Contract No. I-18-4380
- Tri-State Tollway (I-94) Pavement and Structural Preservation and Rehabilitation Project (Half Day Road to Lake Cook Road)  
- Contract No. RR-16-4277
- EOWA, I-390 Project (Illinois Rt 83 to York Road)  
- Contract No. I-17-4680
- I-90 (Jane Addams Memorial Tollway) Pavement Reconstruction and Bridge Widening Project (Elgin Toll Plaza to Fox River)  
- Contract No. I-14-4189

#### Current and Past Other Agency Construction Inspection Experience as Subconsultant

- CDOT Citywide Residential Street Lighting Project (B-1-624)
- CDOT Lakeshore Drive Bridge over La Salle Drive Rehabilitation (E-1-4703)
- CDOT Milwaukee Ave. Section IV Improvements Project, Addison to Belmont (B-1-642)
- Metra Deering Bridge (UPN) Rehabilitation Project
- Metra Z-100 Bridge (over Fox River) Construction Project
- Metra Rehabilitation of Electric District Line Bridges over 63rd and 64th Streets
- Metra A-32 Bridge (MDN) Replacement Over Milwaukee Avenue

### Program Management

- NICTD Double Track Project - Deputy Program Manager  
- Prime Consultant
- NICTD West Lake Corridor Improvement Project  
- Prime Consultant
- IDOT CREATE 75th Street CIP Program Manager (PTB 189-027)  
- Subconsultant
- CDOT Lincoln Yards Redevelopment PMO Project (B-9-442)  
- Subconsultant
- Metra Project Administration Blanket (K41329)  
- Prime Consultant
- Metra Project Administration Blanket (K20204)  
- Prime Consultant

### Phase I, Phase II, and Design/Build (Subconsultant)

- Metra BNSF Kendall Extension Phase I Study
- CDOT Burley Avenue Improvements Phase II Project (B-1-428)
- CTA RPM Phase I Design-Build Project



# LT LEON ASSOCIATES, INC.

500 E LOCUST STREET, SUITE 400 DES MOINES IA 50309 P: 515.422.7016 WWW.LTLEON.COM

LT Leon Associates is an engineering firm that specializes in civil and environmental engineering, water resources, conservation, and planning. Our team of engineers and technical specialist develop and deliver innovative sustainable solutions that facilitate the betterment of the community, the environment, and public health and safety. We are committed to the enhancement and conservation of our natural resources.

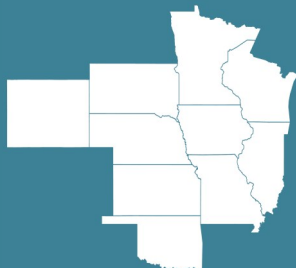
## PROFESSIONAL SERVICES

### CIVIL ENGINEERING | CONSERVATION | PLANNING

- Hydrologic/Hydraulic Engineering
- River Restoration, Wetland Restoration
- Sustainable Stormwater Management
- Floodplains & Watershed - Modeling, Mapping, Management, Studies, Permitting
- Mine Land Reclamation
- Conservation Planning and Engineering
- Sanitary Sewer Systems, SSES, I&I Studies
- Water Main Distribution Systems
- Transportation, Transit, Rail, Aviation
- Sustainable Site Design
- Bicycle and Pedestrian Planning and Design
- ADA Assessment & Design
- Parks and Recreation Projects
- Funding Assistance, Grant Writing
- Regulatory Permitting Assistance
- SWPPP Management
- Construction Administration & Oversight
- Pipeline Integrity
- GIS Mapping and Asset Management
- Topographic & Hydrographic Surveying

## LICENSED STATES

Iowa  
Missouri  
Illinois  
Minnesota  
Nebraska  
Wisconsin  
South Dakota  
Kansas  
Oklahoma  
Wyoming



## CERTIFICATIONS

SBA: 8(a) Certified (2013-2022)  
SBA: HUBZone Certified  
SDB: Self-Certified Small Disadvantaged Business  
DBE: Disadvantaged Business Enterprise - Iowa, Illinois, Minnesota, Missouri, Nebraska, Wisconsin

## FEDERAL GOVERNMENT INFO

DUNS NUMBER: 024874244

### NAICS CODES

541330	ENGINEERING
541320	PLANNING
541340	DRAFTING
541370	SURVEYING & MAPPING SERVICES
541620	ENVIRONMENTAL CONSULTING SERVICES
541690	OTHER SCIENTIFIC & TECHNICAL CONSULTING SERVICES
221310	WATER & WASTEWATER DESIGN

SIC CODES: 8711 ENGINEERING SERVICES

PCS CODES: F099 OTHER NATURAL RESOURCES MANAGEMENT & CONSERVATION

F103 WATER QUALITY

C217 A/E MAPPING

## USDA/NRCS TECHNICAL SERVICE PROVIDER

### CERTIFICATIONS

- Comprehensive Nutrient Management Plan Development
- CAP Drainage Water Management Plan
- Channel and Streambank Stabilization

### FEDERAL AGENCIES

- U.S. Army Corps of Engineers - Kansas City District
- USDA Forest Service - Region 1
- United States Postal Service - Western FCCMT
- GSA - Region 6



## WHO WE ARE

**M Squared Engineering, LLC (M<sup>2</sup>)** is a full-service civil engineering firm offering comprehensive professional services to municipalities, government agencies, and private developers throughout the Midwest. Established in 2003, our firm is headquartered in Cedarburg, WI with a branch office in Chicago, IL.

We serve various governmental agencies throughout the Midwest, including IDOT, Illinois Tollway, MWRD, MMSD, WisDOT, and various counties and municipalities. We maintain focus on the project's successful delivery while observing and respecting local ordinances, economic efficiency, and ecological environments. Our team's passion and vision set us apart from the rest by ensuring innovative, cost-efficient solutions while meeting or exceeding regulatory requirements.

The M<sup>2</sup> team believes in giving back to our community by volunteering our time, efforts, and experience through a variety of organizations including Cedarburg Education Foundation, Engineers in Action, Cedarburg Friends of Parks and Recreation, Ozaukee County Agricultural Society, Children's Hospital of Wisconsin, and more.



## CERTIFICATIONS

- **DBE:** IDOT, MWRD, MMSD, WisDOT, Milwaukee County, MNDOT
- **WBE:** MWRD, MMSD, WDOA
- Woman-Owned and Small Business
- **MBE:** Dept. of Commerce, MMSD, WDOA

## DOT PRE-QUALIFICATIONS

- Highways—Freeways
- Special Studies—Location Drainage
- Hydraulic Reports—Waterways: Complex
- Hydraulic Reports—Waterways: Typical
- Highways—Roads & Streets
- Special Services—Construction Inspection

## OUR DESIGN TEAM

• <b>Minal Hahm, PE, CFM</b>	Principal Engineer	28 yrs
• <b>Matthew Hahm, PE</b>	Principal Engineer	26 yrs
• <b>David Bachhuber, PE</b>	Senior Engineer	18 yrs
• <b>Dixie Weinkauff, PE</b>	Senior Engineer	37 yrs
• <b>Doug Weinkauff</b>	Senior Engineer	37 yrs
• <b>Peggy Stucky, EIT</b>	Lead Resident Engineer	21 yrs
• <b>Eric Greenfield, EIT</b>	Assistant Resident Engineer	5 yrs
• <b>Jacob Winker, EIT</b>	Staff Engineer	3 yrs
• <b>Dan Minunni, EIT</b>	Staff Engineer	4 yrs
• <b>Dan Chyko</b>	Staff Engineer/Construction Inspector	2 yrs
• <b>Tony Gromacki, PLS</b>	Senior Surveyor	41 yrs
• <b>Adam DeGroot, PLS</b>	Senior Surveyor	26 yrs
• <b>Theodore Grover</b>	Survey Technician	3 yrs

## SERVICES

- Phase I/II Transportation Engineering
- Construction Engineering
- Municipal Engineering
- Aviation Engineering
- Rail Engineering
- Hydrologic and Hydraulic
- Water Resource Management
- Stormwater Management
- FEMA Floodplain Management
- Site Design/Land Development
- Land Surveying
- Construction Staking
- Construction Inspection
- Erosion Control Inspection
- Phase 1 Environmental Hazmat

## FEDERAL

- **DUNS:** 169166076
- **Cage:** 33AC1
- **S/W/MBE Business**

## NAICS

- **541330:** Engineering Services
- **541370:** Surveying, Mapping Services
- **541620:** Environmental Consulting Services
- **488210:** Support Activities for Rail Transportation

### ILLINOIS

230 W. Monroe St., Suite 1400  
Chicago, IL 60606  
312.429.4976

### WISCONSIN

N19W6719 Commerce Ct.  
Cedarburg, WI 53012  
262.376.4246



## IDOT PREQUALIFICATIONS

- Highways - *Roads and Streets*
  - Hydraulic Reports - *Pump Stations*
  - Hydraulic Reports - *Waterways: Complex*
  - Hydraulic Reports - *Waterways: Typical*
- Location Design Studies - *Reconstruction/ Major Rehabilitation*
- Location Design Studies - *Rehabilitation*
  - Special Services - *Construction Inspection*
- Special Services - *Sanitary*
- Special Services - *Surveying*
- Special Studies - *Feasibility*
  - Special Studies - *Safety*
  - Special Studies - *Location Drainage*

Mackie Consultants, LLC is a full-service consulting engineering firm providing a wide array of civil engineering, land surveying and construction services from Phase I through Phase III. Our belief in building a strong professional relationship with our clients is the cornerstone to the success of the project and our reputation. Since 1975, we have dedicated ourselves in providing the foremost in customer service by taking the time to understand our client's specific project needs and goals.

We have a successful record of understanding project requirements, assessing complex constraints, recognizing the concerns of multiple stakeholders and working collaboratively with others to achieve the project goals. We have experience in the completion of multi-objective designs that are both innovative and cost effective.

We can provide the following services:

### Land Surveying

Mackie Consultant's surveyors have extensive experience in all aspects of providing land surveying services. They have worked with engineers, contractors and government officials and understand what each entity needs to meet project requirements. Our experience includes determining property boundaries and right-of-way locations; obtaining field information for transportation projects and hydraulic analysis; and staking roadway improvements. We can complete Plats of Highway, Legal Descriptions, 3D scans, 3D models, Land Title Surveys, Topographic Surveys, Hydrographic Surveys, Title Document Review and Record Drawings.

### Phase I Services

Our staff has completed various Phase I studies and have the following capabilities:

- Location Drainage Studies
- Hydraulic Reports (Waterways and Pump Stations)
- Dry Utility Conflict and Design Assessment
- ADA/IAC Compliance Analysis
- Engineer's Opinions of Probable Cost
- Right-of-Way Analysis
- Phase I design drawings
- Maintenance of Traffic Plans
- Complete Streets Analysis
- Preliminary Geometric Plans
- Underground Utility Design
- Crash Analysis



Mackie Consultants, LLC

9575 W. Higgins Road, Suite 500  
Rosemont, IL 60018  
(847) 696.1400

140 S. Dearborn Street, Suite 1520  
Chicago, IL 60603

[www.mackieconsult.com](http://www.mackieconsult.com)

Firm Contact:

Trudy Buehler, PE  
[tbuehler@mackieconsult.com](mailto:tbuehler@mackieconsult.com)

### Phase II Services

We are well versed in the completion of the Plans, Specifications and Cost Estimates required for complex roadway improvement projects. Our experience includes Intersection Improvements, Roadway Widening, Complete Reconstruction, and Roadway Rehabilitation Projects. Our clientele has included the Illinois Department of Transportation, Illinois State Toll Highway Authority, Cook County Department of Transportation and Highways, City of Chicago, Various County and Municipal Agencies and private entities. These projects have been financed through Federal, State and Local Funds.

### Phase III Services

Our construction engineers are experienced professionals that have been cross trained in providing Phase I, Phase II and land surveying services. This cross training provides our staff with a broad range of knowledge that can be applied in the field when challenges arise. We believe in being active participants during the project; observing, planning and proactively anticipating the actions required in the field. We work on all levels to ensure the project runs smoothly, on schedule and under budget.

*When you choose Mackie Consultants, LLC you choose a professional staff that understands the collaboration required between land surveyors, engineers, stakeholders and owners.*

## Quality Assurance, Survey, Construction Inspection, Design

Millennia Professional Services (MPS) was founded in 2004 on the principle that exceptional quality engineering work is the result of experience, efficiency, intense dedication, and a diverse set of ideas.

Our mission is to enable our public and private sector clients to succeed at their goals by providing exceptional quality, unparalleled economic value, and consistent timely delivery; and by developing synergistic client relationships built on trust.

MPS is a certified Disadvantage Minority Business Enterprise (DBE/MBE) prequalified by the Illinois Department of Transportation and servicing private and public sector clients across Illinois and Missouri. We provide material testing services on: concrete, asphalt, aggregates, soils and other construction materials. Our team of experienced, licensed professionals provides a wide variety of services to meet your business needs with high quality, high value results. MPS has fully equipped laboratories accredited by IDOT, AASHTO Resource (AMRL), CCRL, ASTM, and O'Hare airport.

### Field Services\*

- Soils and Geotechnical
- Controlled Earth Fills
- Portland Cement Concrete (PCC)
- Hot Mix Asphalt (HMA)
- Reinforcement Bar Observation
- Recycled Concrete Aggregates
- Pervious Concrete
- Resistivity Testing
- Foundation Observation
- Structural Steel Observation
- Construction Inspection
- Surveying (Route and Land)
- Non Destructive Testing of PCC

### Laboratory Services\*

- Portland Cement Concrete (PCC)
- Modulus of Elasticity
- Hot Mix Asphalt (HMA)
- Extraction Analysis
- Volumetric Analysis
- Soils Classification
- Unconfined Compressive Strength
- Aggregates
- Recycled Aggregates
- Aggregate Gradation Analysis
- Aggregate Specific Gravity
- Compressive Strength of Concrete, Mortar, Grout, Epoxy, etc.

### Millennia is centered on the following core values:

- ◇ Providing high quality service and on-time deliverables.
  - ◇ Valuing our clients' trust.
  - ◇ Understanding our clients' needs and goals.
- ◇ Providing the public with a better quality of life by improving infrastructure.
  - ◇ Valuing our employees to maintain our depth of expertise.
- ◇ Promoting corporate values such as open communication, continuous improvement, and open-book management.
- ◇ Always being open minded to new ideas and technologies.
  - ◇ Giving back to the community.

## PREQUALIFICATION

### Location and Design Studies (Rehabilitation)

#### Highways

- Roadways and Streets
- Freeways

#### Special Services

- Construction Inspection
- Surveying (Route and Land)
- Quality Assurance HMA & Aggregate
- Quality Assurance PCC & Aggregate
- Sanitary

#### Special Studies

- Traffic Signals
- Traffic Studies
- Feasibility
- Safety
- Location Drainage

#### Hydraulic Reports

- Pump Stations
- Waterways: Typical
- Waterways: Complex

#### Geotechnical Services

- General Geotechnical Services
- Subsurface Explorations
- Structure Geotechnical Reports (SGR)

*\*Call for additional available services*

**Website:** [www.millennia.pro](http://www.millennia.pro)

#### Chicago Office

##### Ramon Dela Cruz

2600 Warrenville Road, Suite 203  
Downers Grove, IL 60515  
630.705.0110

#### Peoria Office

##### Paul Moreno

850 North Main Street  
Morton, IL 61550  
309.321.8141

#### Metro East Office

##### Gary Hoelscher

11 Executive Drive, Suite 12  
Fairview Heights, IL 62208  
618.624.8610

#### St. Louis Office

##### Gary Hoelscher

6439 Plymouth Ave, Ste W-129  
St. Louis, MO 63133  
314.531.3981



## Material Solutions Laboratory

1040 Bonaventure Dr. Elk Grove Village, IL 60007  
O: 847.466.7216 F: 847-285-1712

**Material Solutions Laboratory (MSL)** is an IDOT DBE certified Professional Civil Engineering Firm located in Elk Grove Village, IL. MSL believes that our transportation systems are vital to the economic prosperity of our community and nation, and Quality construction is essential for successful projects. MSL is committed to building the best transportation systems by employing personnel who are dedicated to excellence. We believe in investing in our employees thru education, training, and personal development and utilizing emerging technologies that will advance our industry and provide value to our employees and clients.



MSL provides complete Field and Laboratory QA Materials Testing for Aggregates, Portland Cement Concrete, Hot Mix Asphalt, Soils and is prequalified in construction inspection. MSL has quickly risen to be considered one of the top construction material testing firms in Northern Illinois specializing in road transportation projects. Material Solutions Laboratory has a fully equipped laboratory which is accredited by AASHTO, CCRL, AMRL, AAP, and ACI.



MSL recently purchased and implemented a software system called Spectra QEST which is the leading Laboratory Information Management System (LIMS). This also included considerable customization of the Spectra QEST platform, which allows MSL to perform field and laboratory testing per IDOT and Tollway requirements and automatically generate reports without a 2<sup>nd</sup> person performing data entry. We are currently the only laboratory in the Chicagoland area with this technological capability. We believe that this type of data driven system will become common in our industry and MSL is excited to be on the “cutting” edge of this technology and to share its benefits with our clients.

### IDOT Pre-Qualification Categories:

- Special Services – QA HMA & Aggregate
- Special Services – QA PCC & Aggregate
- Special Services – Construction Inspection
- **IDOT DBE Prequalified Engineering Consultant**

### MSL Profile:

- 40+ Phase III Engineering Staff
- 55+ IDOT PTB Projects Successfully Completed
- 25+ Tollway PSB Projects Successfully Completed
- 20+ County QA Projects Successfully Completed

## TOLLWAY MATERIAL TESTING PROJECT EXPERIENCE

### Tollway Reconstruction

1. I-94, Edens Spur Reconstruction, RR-16-4275
2. I-88, York Road Plaza to I-290, RR-13-4116
3. I-90, Arlington Heights to Oakton Street, I-14-4187
4. I-90, Higgins to Roselle, I-14-4190
5. I-90, Barrington Rd Ramp Reconstruction, I-14-4192
6. EOWA, US 20 to Roselle, I-13-4609
7. I-90, IL-25 Bridge & Ramp Reconstruction, I-13-4104
8. I-90, Barrington & Higgins Bridge Recon., I-13-4105
9. I-90 at Fox River Bridge, Contract I-12-4048
10. I-57 at I-294 Interchange, Contract I-12-4067
11. EOWA – Thorndale Ave Flyover at I-290
12. I-90, Arlington Heights to East of Oakton, I-13-4100

### Tollway Rehabilitation

1. I-355, I-55 to Army Trail Road, RR-17-4295
2. I-88, US 52 to Midway Road, Contract RR-13-5661
3. I-88, Annie Glidden Rd to IL 56, RR-10-5615
4. I-90, Barrington Rd to Elgin Plaza, I-09-5588

### Tollway Misc. & Maintenance

1. M-7 Tollway Maintenance Facility, RR-14-4202
2. I-88, IL-59 to Washington St., RR-17-4312
3. I-88, Washington St. to York Rd., RR-17-4313
4. I-294, Mile Long Bridge Maintenance, RR-16-5714
5. I-90, Rockton to Spring Creek (11 Bridges), RR-16-5715
6. I-294, Noise Abatement wall, RR-16-5716
7. I-294, Grand Ave Interchange, RR-17-4291
8. I-90, Elgin Plaza to Kennedy – ITS Installation, I-15-4227

### Tollway Quality Representative

1. I-90, NSMJAWA Watermain Relocation – I-14-4641
2. I-90, NSMJAWA Watermain Relocation – I-14-4648
3. I-90, NSMJAWA Watermain Relocation – I-14-4180
4. I-88, US 30 to US 52 – RR-13-5660R
5. I-88, Ramp Reconstruction @ Orchard Rd., RR-18-4403
6. I-88, Annie Glidden to IL 56, RR-16-4254

# CAPABILITY STATEMENT

PRIMERA ENGINEERS, LTD. | PRIMERAENG.COM

Primera is a people-first, full-service, certified woman-owned (WBE) engineering design and consulting firm offering a wide range of professional services centered around three major areas of expertise: **Buildings, Transportation, and Utilities**. Our Transportation division offers a wealth of experience and expertise in the study and design of roadways, expressways, bridges, bike paths, utility, aviation, as well as stormwater infrastructure, land developments, playgrounds, and recreation areas. We've steadily grown to offer comprehensive planning, design, and construction management services focused on client satisfaction at every turn. Whatever the project type, size, or complexity, we are proactive, engaged, and constantly striving to be the best at what we do.

## WHAT WE VALUE

We are: people people, knowledge fanatics, expert collaborators, and relationship engineers.

## OUR EXPERTISE + CORE COMPETENCIES

- Roadway Studies / Design
- Bridge Design / Inspections
- Construction Management
  - Resident Engineer
  - Assistant Resident Engineer
  - Inspection
  - Documentation
  - Primavera P6 Scheduling
- Site Civil
- Water Resources
- Airport Planning / Design
- Bikeways & Trails
- Facilities Engineering
- Utility Coordination

## CLIENTS + PARTNERS

- Illinois Tollway
- IDOT
- INDOT
- DuPue County DOT
- Cook County DOTH
- Chicago Department of Aviation

## ILLINOIS TOLLWAY EXPERIENCE DESIGN PROJECTS

- I-355 and I-90 Roadway & Bridge Rehabilitations
- I-294 Various Bridge Repairs
- I-90 Reconstruction & Add Lane
- Elgin O'Hare Western Access Design & Management
- Randall Road Interchange Study
- Multiple DUR Contracts

## CONSTRUCTION PROJECTS

- I-90 Retaining Wall, Noise Wall, and Bridge Widening
- I-355 and I-88 Various Bridges & Retaining Walls Repairs
- Elgin O'Hare Western Access, Wood Dale Road
- I-94 Edens Spur

## MENTORSHIP

Primera supports the Tollway's Partnering 4 Growth initiative and mentorship programs in general.

- Sanchez & Associates
- Garza-Karhoff Engineering (*IDOT Illinois Route 22 Phase II Project*)
- Fuhrmann Engineers (*IDOT Bicycle & Pedestrian Study*)



*The plans Primera prepared were the best set of plans I have seen in 7 years...very minimal RFI's and everything went smoothly during construction"*

**TERRY MCCABE**

ILLINOIS TOLLWAY CONSTRUCTION PM  
[I-90 REHABILITATION PROJECT]

## LET'S CONNECT

**STACIE DOVALOVSKY, PE** | VICE PRESIDENT,  
TRANSPORTATION DIVISION MANAGER  
sdovalovsky@primeraeng.com  
(312) 242-6320

**ROB DEMING, PE** | VICE PRESIDENT, CIVIL  
TRANSPORTATION DEPARTMENT MANAGER  
rdeming@primeraeng.com  
(312) 242-6414

650 Warrenville Road, Suite 200  
Lisle, Illinois 60532

# capability statement



OSEH Inc., is an African American owned firm which started operations in 2017 and is experiencing growth year over year because of quality performance and strong partnerships. This stems from a dedication to execution and follow through for all tasks within the engineering design process

## Our Values

Excellence, Innovation and Good Stewardship. We believe in meeting and exceeding our commitments to our clients and partners. Our team is committed to delivering unmatched project solutions through transparent, flexible, and timely coordination.

## Our Core Services

OSEH staff collectively bring over 125 years of experience in the design of Highways, Local Roads and Traffic Engineering. OSEH Inc. has 3 registered professional engineers with 3 additional technical staff, extending our workload capacity. We also added to our prequalifications with Safety Studies and Construction Inspection.

### Highways and Local Roads PS&E

Key staff from OSEH Inc. have been involved with roadway design ranging from two lane rural roads to complex multi-lane highway and interchange plans. Our team can provide complete design services from data collection to contract PS&E.

Roadway Geometry Alternatives	Signing and Pavement Marking Plans
Horizontal and Vertical Alignments	Utility Conflicts/Coordination
Maintenance of Traffic Plans	Sidewalk and ADA Compliance

### Traffic Engineering

Accurate traffic data collection and modeling are at the heart of all decisions for roadway improvements. The team at OSEH has developed a strong working knowledge in various facility planning and modeling tools. Our Engineers are equipped and trained to provide traffic engineering design in the following areas:

Simulation Modeling	Traffic Impact/Intersection Design Studies
Traffic Video Counts (Miovision)	Safety & Feasibility Studies

### Other Services

Construction Inspection	Program/Project Management
Pole Loading Analysis	Site/Civil Design Plans

## Primary Contact

**Akiwumi Attawia, P.E., President**

D. 312.776.2182      C. 630.337.5484      E. aattawia@osehinc.com

### Address

401 S. Carlton Ave., Suite 201  
Wheaton, IL 60187

### FEIN

82-2645926

### NAICS Codes

541320 Urban Planning  
541330 Civil Engineering Services  
237310 Construction Management  
541512 CADD  
541715 Research

### IDOT Prequalified

Highways – Roads and Streets  
Location Design Studies –  
Rehabilitation  
Special Services – Construction  
Inspection  
Special Studies – Safety Studies  
Special Studies – Traffic Studies

### Certifications/Registrations

Illinois State Board of Elections  
Registration No. 41388  
IDFPR Design Firm – Professional  
Engineering No. 184.007766-0002  
MBE by Cook County of Illinois  
DBE by IDOT Bureau of SBE  
IPG Vendor No. IPG-03550810

### Business References

STV Inc.  
Infrastructure Engineering, Inc.  
Milhouse Engineering & Construction  
Lochmueller Group  
Parsons Transportation Group  
Christopher B. Burke Engineering, Ltd.  
Millennia Professional Services  
Garza Karhoff Engineering, LLC  
HDR, Inc.



# OUR SERVICES



## TRANSPORTATION

- \* Roadway Improvement
- \* Geometric Design
- \* Feasibility Studies
- \* Traffic Control / MOT Plan
- \* Restoration Plans



## PROJECT/CONSTRUCTION MANAGEMENT

- \* Scope, policy & procedure implementation
- \* Scheduling
- \* Reporting
- \* Budgeting
- \* Surveying



## PLANNING & LAND DEVELOPMENT

- \* Site Civil Design
- \* Scope of Work
- \* Mechanical
- \* Electrical
- \* Plumbing
- \* Fire Protection



## UTILITIES

- \* Telecom
- \* Sewer
- \* Gas
- \* Electricity
- \* Permitting
- \* As-Built



## OUR MISSION & FOCUS

TO LEVERAGE OUR PROFESSIONAL ENGINEERING EXPERIENCE, AND NETWORK TO ENSURE A SMOOTH PROCESS FOR ADVANCING INFRASTRUCTURE PROJECTS; WHILE PROVIDING HIGH QUALITY DESIGNS BY UTILIZING INNOVATIVE TECHNOLOGY.

## IDOT PRE-QUALIFICATIONS

- \* Traffic Studies
- \* Highways - Local Roads & Streets
- \* Special Services - Construction Inspection

## CDB PRE-QUALIFIED

- \* Civil Engineering
- \* Mechanical Engineering

## NAICS CODES

541330 Engineering Services  
561730 Miscellaneous Maintenance  
541340 Computer Aided Design & Drafting  
237990 Construction Management  
925120 Urban Planning

TEL: (312) 407-6346  
FAX: (312) 407-6352  
[www.pinpointpe.com](http://www.pinpointpe.com)



**Addresses:** 2117 St. Louis Drive 1619 S. Greenwood Ave  
Honolulu, HI 96816 Park Ridge, IL 60068  
**Phone:** 808.778.2260 773.715.0056  
**Email:** Admin@qr-se.com  
**Fax:** 808.737.7808  
**Website:** www.qr-se.com

DUNS #08-107-9242  
CAGE #87R81

#### CERTIFICATIONS

Hawaii & Illinois  
DBE/WBE/MBE  
USACE Contractor Quality  
Control (CQC) Course  
Instructor  
Construction Manager (CCM)  
OSHA 30

#### NAICS CODES

541330 Engineering Services  
541340 Drafting Services

#### OFFICE LOCATIONS

Honolulu, Hawaii  
Park Ridge, Illinois

#### KEY PERSONNEL

**Kai Nani Kraut, PE, CCM/**  
President and Principal  
Engineer, 26+ yrs. Experi-  
ence, Federal, State, Private

**Tre Kraut, PE, MBA**  
Executive Vice President, 24  
yrs. Experience in Design,  
IDOT, Tollway, County

**Allyn Tabata, PE, CCM/VP,**  
Environmental Services, 35+  
yrs. with military construc-  
tion

**Joel Thomas, CCM/VP,** Field  
Operations, 12+ yrs. Experi-  
ence

Greg Feeny, PE, Senior Plan-  
ning Engineer, worked at  
IDOT for 30+ yrs.

### Company Summary

QRSE is a professional services company specializing in civil engineering. Our primary area of expertise is with transportation projects for government agencies. KaiNani Kraut launched QRSE in 2018 as a subconsultant on the Honolulu Rail Transit Project and QRSE has been growing steadily ever since. QRSE is DBE, WBE, and MBE certified. Our QRSE staff of 30 professionals has over 300 years of planning, design, construction and project management, and program management experience for civil engineering projects. As our company names states, *Quality Results, Skillful Execution*, our group of professionals pride themselves in providing the quality service our clients deserve.

### Core Competencies

#### Planning Engineering Services

- Location Design Studies
- Project Design Reports
- Location Drainage Studies
- Feasibility Studies
- Intersection Design Studies
- Pedestrian Accommodations
- Context Sensitive Public Involvement
- NEPA Documentation—Federal Highway Administration (FHWA)
- Federal Transit Administration (FTA)
- Environmental Assistance & Permitting

#### Program Management Services

- Manuals and Standards Development
- Quality Plan Review
- Construction Administration Development
- e-Construction implementation

#### Design Engineering Services

- Freeway, Tollway, and Interchange Design
- Roadway & Intersection Design
- Roadside Safety Design
- Drainage Design
- Soil Erosion & Sediment Control Design
- Utility Coordination and Design
- Traffic Management and Safety
- Best Management Practices
- Estimating

#### Construction Management Services

- Field Inspection Services
- High Voltage Inspection Services
- Highway, Street, and Bridge Construction
- USACE Constructor Quality Control
- Construction Documentation Preparation and Specifications
- Concrete Field Testing
- Traffic Control
- Scheduling

### Past Performance

- Subconsultant for Honolulu Authority for Rapid Transit (HART) Project. Contact: **Stacy Miyamoto**, SSFM, 808.531.1308, smiyamoto@ssfm.com
- Construction Management Services for HDOT, Interstate Route H-1 (Kapolei Interchange Complex), Contact: **Art Sickles**, Arthur.Sickles@hawaii.gov
- Project Manager for I-88 Pavement & Structural Preservation & Rehabilitation for Illinois Tollway, Contact: **Mohamad Faraj**, 630.241.6800, mfaraj@getipass.com
- Project Manager for I-88 Roadway Resurfacing for Illinois Tollway, Contact: **Rick Hanba**, 630.241.6800, rhanba@getipass.com



## Firm Profile

**SE3, LLC** is a professional services company specialized in civil engineering. Our primary areas of expertise are within the fields of transportation, ITS, structural, water/sewer design, site development, construction management and inspection, and municipal engineering.

The core management team at SE3 collectively has over seventy years of planning, construction management, and design experience assisting our clients with their infrastructure projects. From local community projects to high-profile national projects, including the restoration of the Statue of Liberty, our staff has established a solid reputation by delivering reliable, cost-effective, and efficient solutions for our clients.

Our talented team of professionals follows the founding principles and vision of this company - everything we do must be in service to our family of clients, community, and staff.

**SE3, LLC is dedicated to being a company that practices the highest level of service through honesty and integrity at all levels.**



We are located in 9 offices (and one field office) across 5 states.



## Firm Demographics

- African American owned
- D/MBE Firm in Illinois, and 11 other states

Since 2004, **SE3** has grown from two employees to over **80** across the Midwest and South  
As of 2019, our team includes:

- 20+ Registered Professional Engineers
- 1 Registered Structural Engineer
- 1 Registered Geologist
- Construction Managers certified in IDOT Construction Documentation
- 1 Professional Transportation and Operations Engineer (PTOE)
- A full-service contingent of highly professional staff dedicated to client satisfaction

## Firm Experience

- Tollway General Eng. Consultant
- Tollway Design Corridor Manager
- Tollway IL 53 North Ext.
- Tollway I-90 design contracts
- Tollway I-294 Design + MGMT
- IDOT and Tollway CEI
- IDOT Var-Var Ph I and II
- IDOT In-House projects



**NTTA**



## Local Contact Information



Principal: Jason Martin, P.E.  
1111 Burlington Ave, Suite 111  
Lisle, IL 60532  
P: 630-641-9900  
jmartin@se3.us



## Firm Qualifications

- Transportation Engineering
- Structural Engineering
- Intelligent Transportation Systems (ITS)
- Water Supply Infrastructure
- Storm Drainage Systems

## What we do

Highways



Roads and Streets

Special Services



Construction Inspection

Location Design Studies



Rehabilitation

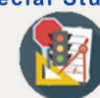


Reconstruction/Major Rehabilitation

Special Studies



Location Drainage



Traffic Studies

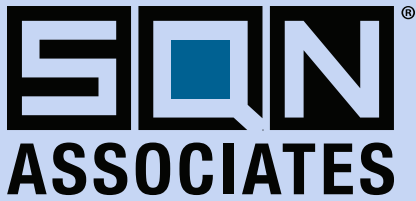


Traffic Signals



www.se3.us

Chicago | Kansas City | Dallas | Austin | Denver



Sine Qua Non | Absolutely Essential

SQN Associates, LLC (SQN) is a recognized leader providing Construction Management, Program & Project Management, and Project Controls. Our talented and experienced professionals bring a proactive approach to your project and provide lasting value throughout the process from concept to project delivery and closeout.

SQN is certified as a Disadvantaged Business Enterprise (**DBE**) in Illinois, Indiana, and Georgia. We are also certified as a Minority Business Enterprise (**MBE**) by the City of Chicago, and as a Women's Business Enterprise (**WBE**) by the City of Chicago and the Women's Business Enterprise National Council.

We are prequalified by the Illinois Department of Transportation for Special Services – Construction Inspection.

#### NAICS CODES:

**236210** - Const. Mgmt., Industrial Building  
**236220** - Const. Mgmt., Commercial Bldg  
**237110** - Const. Mgmt., Water & Sewer Line  
**237120** - Const. Mgmt., Oil and Gas Pipeline  
**237130** - Const. Mgmt., Power/Comm Line  
**237310** - Const. Mgmt., Hwy, Street & Bridge  
**237990** - Const. Mgmt., Mass Transit  
**541330** - Const. Engineering  
**541611** - General Management Consulting

#### SQN ASSOCIATES, LLC

134 N LaSalle St | Ste 700  
Chicago, IL 60602  
P: (312) 625-9500  
W: [www.sqna.com](http://www.sqna.com)  
E: [marketing@sqna.com](mailto:marketing@sqna.com)

# CAPABILITIES STATEMENT

## CORE COMPETENCIES

### CONSTRUCTION MANAGEMENT

By aligning the right knowledge, experience, and expertise of our associates to project needs, SQN provides comprehensive construction management services with customized solutions for project delivery.

- Project Management
- Resident/Office Engineering
- Field Oversight/Inspection
- Project Controls
- Quality Management
- Document Control

### PROGRAM & PROJECT MANAGEMENT

SQN provides technical and administrative services throughout the project lifecycle to accomplish project objectives while reporting on project facets and protecting the interests of our clients.

- Owner's Representative
- Testing & Commissioning
- Community Relations
- Constructability Reviews
- Value Engineering
- Contract Delivery Strategies
- Safety Oversight

### PROJECT CONTROLS

Successful projects – large and small – rely on the accuracy and timeliness of a vast array of interconnected scope, cost, and schedule information. This allows the team's management to make informed decisions, identify opportunities, and take necessary action to correct potential issues or trends.

- Contract Administration
- Change Order Management
- Risk Management
- Cost Analysis/Estimating
- Schedule Management/Performance
- Monitoring
- Claims Analysis/ Dispute Resolution
- Budget Development and Management

## MARKETS

- Aviation
- Buildings/Facilities
- Highways/Roads
- Rail
- Transit
- Utilities

## CLIENTS





RAUL V. BRAVO + ASSOCIATES, INC.

**Raul V. Bravo + Associates, Inc. (RVB+A)**, established in 1979, provides services related to the development of Transit Systems with our core competency being passenger rail vehicles. Our firm consists of a specialized group of full-time engineers, including registered professional engineers, designers, quality control inspectors & project management professionals as well as several subject matter expert (SME) associates.

In the early years, our clients included mostly public sector agencies, but quickly expanded to occasionally include the private sector, covering the needs of contractors and suppliers. We appreciate the value of the opportunity of embracing the entire transit industry and gaining knowledge and experience while properly and responsibly managing any potential conflict of interest.

The experience established by our firm over the years allows us to participate in projects from A to Z, from early planning stages to project delivery, through technical and economic feasibility studies, design and development and business and partnership structures.

**RVB+A** provides consulting services to clients in the public and private sector in the domestic and international markets. They include operating agencies, contractors and suppliers, developers, financial institutions, and government DOT's. Over the last 41 years, we have successfully delivered hundreds of projects to more than 450 clients with contract values ranging from \$5,000 desk studies, to \$10/15 million for multiyear, multidisciplinary projects.

Today, our position is unique in the consulting business. We are a small firm with 60/70 employees. As a result, we can respond with speed and efficiency and can successfully compete as a prime for some contracts. We have worked as a prime contractor to public sector agencies and as subcontractor to firms of all sizes both domestically and internationally.

**RVB+A** have gained wide recognition and respect in the industry for the quality of work we do as a competent provider of services. Additionally, RVB+A is currently a Disadvantaged Business Enterprise (DBE) firm, certified by over 40 Federal, State and Regional agencies and can provide, if necessary, the contribution of a small DBE/MBE firm.

**RVB+A's** core competencies include the following skills & services:

- Conceptual Studies and Preliminary Design & Engineering
- Final Detailed Engineering Design
- Systems Integration
- Production Engineering
- Industrial Design
- Technical Writing
- Technology Assessments
- Research & Development
- Computer-Aided Drafting and Design (CADD)
- Infrastructure
- Proposal Development
- Project Management
- Quality Assurance/Quality Control
- Buy America
- Safety and Security
- Financial and Administrative

**Contact:** Julio C. Monroy, Director of Business Development

TEL: 703-326-9092 | E-Mail: [juliomonroy@rvba.com](mailto:juliomonroy@rvba.com)

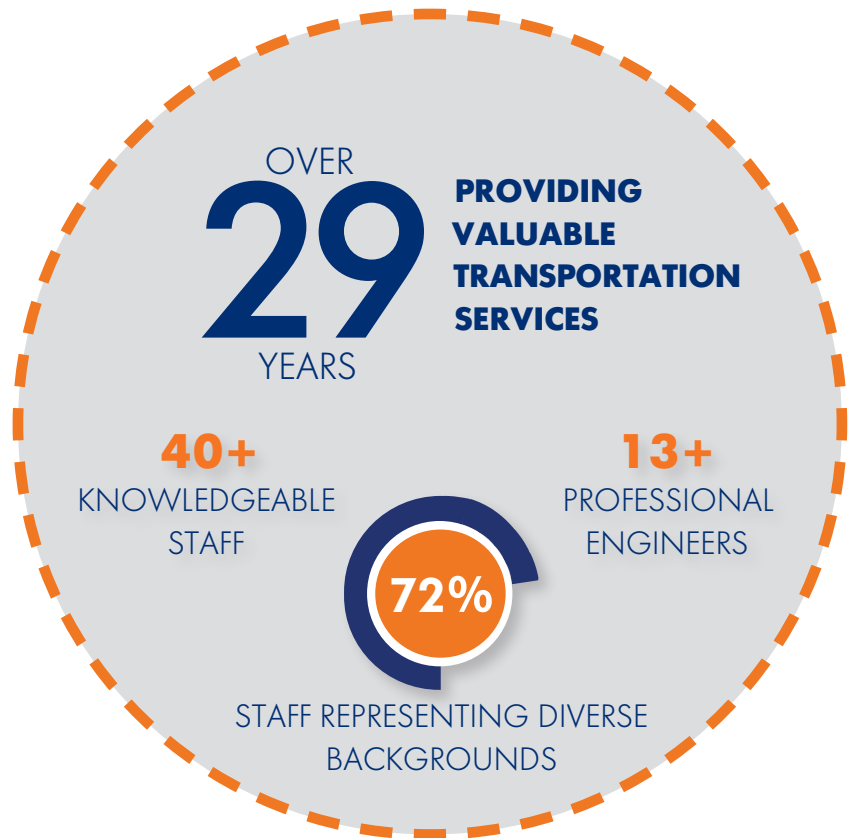


SINGH + ASSOCIATES, INC.  
CONSULTING ENGINEERS



SINGH + Associates is a registered D/M/WBE with substantial experience with the Illinois Tollway processes and procedures. We combine a full array of analytical, design, and engineering capabilities with technological sophistication to develop effective and sustainable public infrastructure. Our services include:

- **Civil + Transportation Engineering**
- **Electrical + ITS**
- **Lighting Design**
- **MEP Engineering**
- **Construction Management**



## ILLINOIS TOLLWAY PROJECT SNAPSHOT



### CONTACT

**Harvind K. Singh | President**

hkaur@singhinc.com

230 W. Monroe Street, Suite 1400

Chicago, Illinois 60606

Work: 312.629.0240

Cell: 847.770.1829



## PREQUALIFICATIONS

- **Special Studies - Traffic Studies**
- **Highways - Freeways**
- **Highways - Roads and Streets**
- **Special Services - Electrical Engineering**
- **Hydraulic Reports - Waterways: Typical**
- **Special Studies - Feasibility**
- **Special Studies - Lighting: Typical**
- **Special Studies - Traffic Signals**
- **Special Services - Construction Inspection**
- **Special Studies - Location Drainage**
- **Special Studies - Safety**
- **Hydraulic Reports - Waterways: Complex**
- **Special Services - Mechanical**
- **Special Studies - Lighting: Complex**



*Reconstructed IL 173 over Reconstructed I-94*

## CONSTRUCTION ADMINISTRATION

Our team will help you create and implement comprehensive construction management strategies, working as an extension of your staff to provide organization, management and communication with an emphasis on quality and safety.

- » As-built drawings
- » Contract administration
- » Constructability review
- » Coordination
- » Quantities documentation
- » Certified inspection
- » Construction material testing
- » Resident engineer
- » Staff augmentation

## TRANSPORTATION PLANNING

Our planners work closely with traffic engineers and design professionals to ensure plans are based on accurate forecasts and costs. We work on projects of all different sizes, from city, county and state to federal levels. Our emphasis on communication with staff, elected officials and project stakeholders will help with collaboration and buy-in to move your project forward.

- » Corridor studies
- » Feasibility studies
- » Pedestrian and bicycle plans
- » Pavement management plans (PMP)
- » 3D renderings and animation

## ENVIRONMENTAL

Our team maintains a strong understanding of environmental laws and regulations and has developed lasting relationships with local, state and federal agencies. Our environmental specialists work closely with engineers, natural resource and cultural resource professionals to facilitate environmental permitting and reports that assist in project development

- » Avoidance, mitigation and monitoring plans
- » Federal, state and local permitting
- » NEPA compliance
  - » Categorical Exclusion (CATEX)
  - » Environmental Assessment (EA)
  - » Environmental Impact Statement (EIS)
- » Noise analysis and abatement
- » Agency coordination
- » Public and stakeholder involvement

## HIGHWAY DESIGN AND ENGINEERING

We use value engineering and innovation to refine concepts and finalize designs, looking at functionality, constructability and cost-saving techniques and phasing to expedite design and construction.

- » Highways
- » Interchanges
  - » Highway-to-highway interchanges
  - » Highway-to-roadway interchanges
  - » Diverging diamond interchanges (DDI)
  - » Single-point urban interchanges (SPUI)
  - » Continuous flow interchanges (CFI)
- » Roundabouts
- » Managed lanes and tollways
- » Retaining walls
- » Lighting
- » Stormwater
- » Alternative delivery (design/build, P3, CMAR)

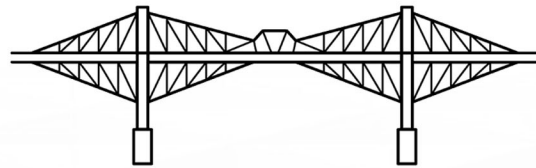
## BRIDGES

Our bridge designers are experienced in all aspects of bridge engineering services including design, inspections and load ratings. Our team works with a variety of software to make sure your project is structurally sound and adheres to AASHTO and state specific codes.

- » Highway bridges
- » Railroad bridges
- » Pedestrian bridges
- » Rehabilitation and historic preservation
- » Accelerated Bridge Construction (ABC)
- » Prefabricated Bridge Elements (PBES)
- » Inspection and load rating
- » Bridge inspection and scour analysis



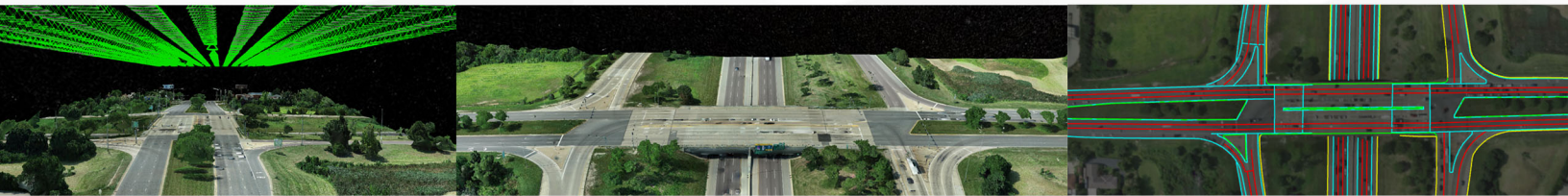
**Stephanie D. Wong**  
Founder & President of SWE  
Solutions



## SWE SOLUTIONS

### Who we are:

- SWE Solutions is a full-service Engineering Consulting firm based in Naperville, IL. Founded in 2021, SWE combines engineering fundamentals with revolutionary technology to achieve client goals. By utilizing cutting-edge visualization software, we allow our clients to explore and collaborate on projects interactively.
- Through information modelling and virtual design, we are able to manage data more efficiently and effectively. We utilize real-world 3D mesh outputs to enhance our precision in design, construction, and inspection.



### What we do:

- Our highly skilled, FAA-licensed drone pilots utilize revolutionary mapping software to capture project locations with survey grade accuracy at 200' altitude.
- After post processing we create intelligent 3D / 4D models, survey virtually to add linework and other topographic items, create surfaces using an array of cutting-edge software.

### Ideal For:

- Our services are ideal for phase I studies and phase II design engineering. Digital Twin assets of an existing site provide project clarity like never before.
- RTK Drone Survey + intelligent modelling outputs are also ideal for the construction process. From quantifying stockpiles, to project tracking and progress photos.



### Why choose us?

- Automated data collection, GCP optimization, and powerful post-processing capabilities have allowed us to vastly cut costs and enhance efficiency for our clients.



engineering group  
service at the highest grade®

OAK PARK - AURORA - OAK BROOK

[thomas-engineering.com](http://thomas-engineering.com)

#### ILLINOIS DEPARTMENT OF TRANSPORTATION PREQUALIFICATION CATEGORIES

- Highways – Freeways
- Highways – Roads and Streets
- Hydraulic Reports – Pump Stations
- Hydraulic Reports – Waterways: Complex
- Hydraulic Reports – Waterways: Typical
- Location Design Studies – New Construction/Major Reconstruction
- Location Design Studies – Reconstruction/Major Rehabilitation
- Location Design Studies – Rehabilitation
- Special Services – Construction Inspection
- Special Services – Sanitary
- Special Services – Surveying
- Special Studies – Feasibility
- Special Studies – Location Drainage
- Special Studies – Safety
- Special Studies - Traffic Signals
- Special Studies – Traffic Studies

#### OFFICE LOCATIONS

238 South Kenilworth Avenue  
Suite 100  
Oak Park, Illinois 60302

762 Shoreline Drive  
Suite 200  
Aurora, Illinois 60504

2625 Butterfield Road  
Suite 209W  
Oak Brook, Illinois 60523

Thomas Engineering Group, LLC (TEG), founded in 2008, provides reliable, sustainable, and cost-effective solutions to the engineering needs of State, County, and Local Agency clients. TEG continues to strategically add quality staff and new disciplines to better serve our highly valued clients and partners. TEG staff work diligently to complete projects with a focus on exceeding client expectations by consistently striving to add value to every task we take on – by providing our trademark **service at the highest grade®**.

TEG staff is comprised of over 40 employees, serving our clients in professional and technical capacities on various types of projects including Transportation Planning and Design, Construction and Resident Engineering, Municipal Engineering, Stormwater Management, and Land Surveying. TEG's annual transportation fee capacity is \$14,400,000.

Our staff of professional engineers and technicians possess the following licenses and certifications:

20	PE	Professional Engineers
22		IDOT Documentation Certified
1	PLS	Professional Land Surveyor
2	PTOE	Professional Traffic Operations Engineers
2	CFM	Certified Floodplain Managers
2		Certified Arborists
1	CPESC	Certified Professional in Erosion and Sediment Control
1	PMP	Project Management Professional
1	CISEC	Certified Inspector of Sediment and Erosion Control
3	DECI	Designated Erosion Control Inspector
1	RSP	Road Safety Professional
1	MBA	Master of Business Administration





## CAPABILITY STATEMENT

### CONTACT INFORMATION

#### Company Name

TranSmart, Inc.

#### Corporate/Government Certifications

DBE, MBE, WBE, WBENC, WOSB

#### Contact Name

Jing (Connie) Li, PE, PhD.  
President & CEO

#### Address

411 S. Wells Street  
Suite 1000  
Chicago, Illinois 60607

#### Telephone

(312) 922-1700

#### Email

cli@transmartinc.com

#### Website

www.transmartinc.com

### COMPANY DATA

#### NAICS Code

541330 - Engineering Services  
541320 - Landscape Architectural Services  
541340 - Drafting Services  
541511 - Custom Computer Programming Services  
541512 - Computer Systems Design Services  
541513 - Computer Facilities Management Services  
541519 - Other Computer Related Services  
541614 - Transportation Management Consulting Services  
541690 - Other Scientific and Technical Consulting Services (Safety Consulting Services)

#### CAGE Code

43EK1

#### Dun & Bradstreet Number

60-718-0254

#### Number of Employees

102 (Full Time)

### CORE COMPETENCIES

TranSmart is a leading provider of engineering, planning, and construction-related services to public clients in the areas of:

- Transportation Engineering and Design
- Intelligent Transportation Systems (ITS)
- Civil Engineering
- Electrical Engineering
- Structural Engineering
- Multimodal Transportation
- Transportation Planning and Documentation
- Connected and Autonomous Vehicles
- Construction Management and Inspection
- Program Management
- Telecommunications/Utilities

In addition to 33 licensed professional engineers, TranSmart's staff is comprised of professionals with licenses and certifications that include structural engineering (SE), transportation operations (PTOE), Cisco Certified Network Associate (CCNA), LEED, bridge inspection (team leader and program manager), and construction oversight (documentation, materials management). TranSmart is prequalified with the Illinois Department of Transportation in 18 categories covering planning, design, and construction phase services covering planning, design, and construction phase services.

### DIFFERENTIATORS

- Partnering in Solutions that Work for You - Yes, it's our tagline; but more than that, it is our focus. We are here to serve our clients and provide a high quality product. Our focus is service and quality.
- TranSmart is a certified Disadvantage Business Enterprise (DBE), Minority Business Enterprise (MBE), Women-Owned Business Enterprise (WBE), Women's Business Enterprise (WBENC), and Women-Owned Small Business (WOSB) firm.

### PAST PERFORMANCE

#### Illinois State Toll Highway Authority

- Intelligent Transportation Systems (ITS) Services Upon Request, Systemwide (*Prime*)
- Design Upon Request – Systemwide, 2014 – 2020, Illinois (*Prime*)
- I-88 Rehabilitation, DeKalb and Kane Counties, Illinois (*Prime*)

#### Illinois Department of Transportation

- Various Phase I Studies, District 1, Cook County, Illinois (*Prime*)
- Various Lighting Projects, Statewide (*Prime*)
- IL 31 Bypass Hazardous Waste Removal Construction Oversight, District One (*Prime*)

#### Chicago Department of Transportation

- Professional Design Engineering Services Task Order, Chicago, Illinois (*Prime*)
- Bridge Design Engineering Services Group 1 Task Order, Chicago, Illinois (*Prime*)
- Wacker Drive Reconstruction, Chicago, Illinois (*Subconsultant*)

#### Transit Agencies

- CTA Red and Purple Line Modernization, Chicago, Illinois (*Subconsultant*)
- Metra Design Upon Request, Structural Design Services, Chicago, Illinois (*Subconsultant*)
- Pace Transit Signal Priority Program, Chicago, Illinois (*Subconsultant*)



## COMPANY OVERVIEW

With more than 200 engineers, Valdes Engineering Company provides detail engineering, project management, construction management and many other professional services to the Utilities, Oil & Gas, Life Sciences, and Chemicals industries. Valdes supports its clients' integrated businesses from gas storage and gas transmission and distribution through generation, electric power transmission and distribution for Utilities. For the Process industries, Valdes supports its clients' clean manufacturing, downstream, midstream and upstream operations.

## INDUSTRIES SERVED



### Utilities

Gas Storage & Transmission  
Substations  
CHP & Cogeneration  
Fossil Power Generation  
Renewables  
Steam Production & Distribution



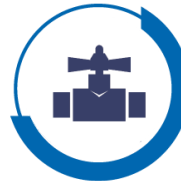
### Oil & Gas

Refining  
Gas Processing  
Pipelines & Terminals



### Chemicals

Petrochemicals  
Specialty Chemicals  
Agricultural Chemicals  
Bulk & Liquid Chemicals



### Midstream

Natural Gas T&D Design  
GIS/Utility Network/CAD  
Compliance & Integrity  
Instrumentation & Controls



### Life Sciences

Biotechnology  
Pharmaceuticals  
Nutraceuticals  
Medical Devices  
Food Processing  
Consumer Products



## EXPERIENCE

- Process Engineering
- Mechanical Engineering
- Electrical Engineering
- Instrumentation & Controls Engineering
- Civil & Structural Engineering
- Piping & Plant Layout
- Pipe Stress Analysis
- Laser Scanning & Surveying
- Project Controls
- Project Management
- Procurement Services
- Construction Management
- Cost Estimating
- for other services CONTACT US...

## CONTACT

Jillian Garcia  
Manager of External Affairs

100 West 22nd Street  
Lombard, IL 60148  
Office 630.678.2847  
Cell 630.452.5125  
jgarcia@valdeseng.com  
www.valdeseng.com



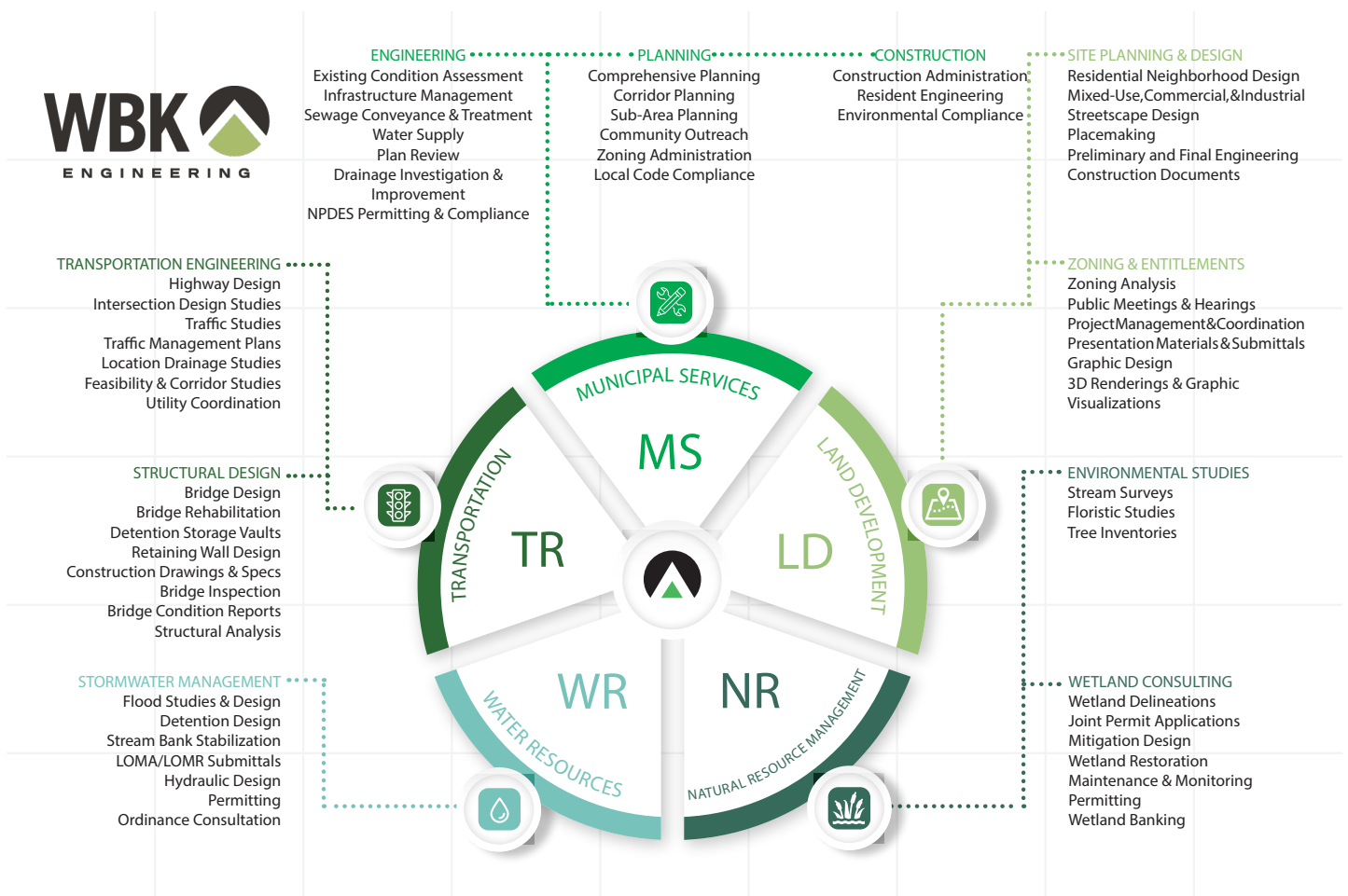
# Firm Overview

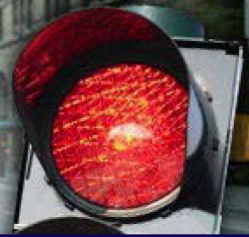
*"At WBK we work closely with our clients and with permitting agencies so that our creative and innovative design solutions are ready for construction sooner. We strive to meet project objectives and budgets, and exceed client expectations, while enhancing the natural*

WBK Engineering, LLC (WBK) is a tribally-owned SBA 8(a) disadvantaged small business, established in 1998 dedicated to providing high quality professional engineering services to clients throughout northern Illinois and southwestern Michigan. Our focus is to provide the personal service of a small, local firm coupled with a high degree of experience, and the depth of resources found in large engineering organizations, with offices in Aurora and St. Charles, Illinois and Battle Creek, Michigan.

Celebrating over twenty years of service, the staff members of WBK are recognized experts in the areas of municipal engineering, stormwater management, wetland and environmental resources, plan review, transportation and structural engineering, design and permitting. WBK employs 30 plus full time staff, including professional engineers, planners, soil scientists, ecologists and erosion control specialists.

Our clients include public agencies and private sector companies and individuals in need of engineering services and sustainable infrastructure that integrate their objectives with the built and natural environments.





## CAPABILITY STATEMENT

### COMPANY

### BIO

➤ **Business Name:**

DAMA Consultants, Inc.

➤ **Awards:**

*IDOT 2016 Engineering Firm  
of the Year*

➤ **Certifications:**

8(a) Program Certification;  
HUBZone Certification;  
Dept. of Transportation  
(DOT) Disadvantaged  
Business Enterprise (DBE) in  
Illinois, Indiana, Michigan,  
Wisconsin;  
Cook County MBE;  
City of Chicago MBE

➤ **NAICS Codes:**

541330 - Engineering Service  
518210 - Data Processing,  
Hosting and Related Services  
541370 - Surveying, Mapping  
541614 - Process & Logistics  
541712 - Research  
541990 - All Other  
Professional Services 925120  
- Urban Planning

➤ **Licenses:**

State of Illinois Engineering  
Services License

➤ **Insurance:**

\$2 Million General Liability

➤ **Memberships :**

American Council of  
Engineering Companies  
(ACEC)

➤ **Point of Contact**

Bader A. Hafeez  
(773) 870-1595

bhafeez@damaconsultants.com

### Core Competencies

DAMA Consultants is a transportation planning and engineering company that provides a broad spectrum of services in transit, traffic engineering and construction inspection.

The company's team of engineers has more than 80 years of combined experience and is supported by an assortment of software that includes VISSIM Traffic Simulation Modeling, SAS Statistical Analysis Software and ArcView Geographic Information System (GIS). DAMA Consultants serves a clientele of government agencies and prime consultants in Illinois.

We offer the following specialized transportation engineering services.

#### Traffic Engineering

- Traffic Signal Design & Timing
- Parking Analysis Studies
- Crash Analysis
- Traffic Data Collection & Statistical Analysis

#### Transportation Planning

- Traffic Forecasting
- Travel Demand Modeling
- GIS Analysis
- Big Data (PostgreSQL)
- Freight Logistics Analysis

#### Transit Planning & Operation

- Transit Planning Schedule

### Current Client & Projects

#### Illinois Department of Transportation

- Statewide Congestion Analysis

#### HDR Engineering, Inc.

- I-90 Roadway and Bridge  
Widening and Reconstruction,  
Lee Street To Kennedy  
Expressway, Phase I  
Engineering Service

#### Parsons Corporation

- Various Traffic Signal  
Coordination and Timing  
(SCAT)

#### Kaskaskia Engineering Group

- Illinois Statewide Long Range  
Transportation Plan

#### Christopher B. Burke Engineering, Ltd.

- Cook County Traffic Signal and  
Electrical Engineering Design  
for Various Locations

#### URS Corporation

- Cook County Long Range  
Transportation Planning  
Services

## CAPABILITY STATEMENT

### Business Name

DAMA Consultants, Inc.

### Awards

IDOT 2016 Engineering Firm of the Year

### Certifications

8(a) Program Certification; HUBZone Certification; Dept. of Transportation (DOT) Disadvantaged Business Enterprise in Illinois, Indiana, Michigan, Wisconsin; Cook County MBE; City of Chicago MBE

### NAICS Codes

541330- Engineering Service  
518210- Data Processing, Hosting & Related Services  
541370- Surveying, Mapping  
541614- Process & Logistics  
541712- Research  
541990- All Other Professional Services  
925120- Urban Planning

### Licenses

State of Illinois Engineering Services License

### Insurance

\$2 Million General Liability

### Memberships

American Council of Engineering Companies (ACEC)

### Point of Contact

Bader Hafeez  
(773)870-1595  
4524 W. Washington Blvd.  
Chicago, IL 60624  
bhafeez@damaconsultants.com

### Core Competencies

DAMA Consultants, Inc. is a transportation planning and engineering company that provides a broad spectrum of services in transit, traffic engineering and construction inspection.

The company's team of engineers has more than 80 years of combined construction experience and is supported by technical inspectors.

DAMA Consultants serves a clientele of government agencies and prime consultants in Illinois. We offer the following specialized construction engineering services:

### Construction Inspection

- Detailed Resident Inspection
- Claim Assessment & Change Orders
- Quality Measurement & Calculations
- Schedule & Budget Coordination

### Current Clients & Projects

Illinois State Toll Highway Authority

- As a prime, we are providing phase III engineering services along Veterans Memorial Tollway (I-355)

GSG Consultants, Inc.

- Phase III construction EB I-90 from IL-171 to IL-43

Engineering Services Group, Inc.

- Assist with program management support to repair tollway facilities

Michael Baker International, Inc.

- Provide pavement markings, delineators & signage, phase II engineering design

Graef USA, Inc

- Assist with the construction of new lanes between I-294 & I-90 for Elgin/O'Hare Western Access

HDR Engineering, Inc.

- I-90 roadway & bridge widening, phase I engineering service